

THIS MAP WAS PREPARED FOR ASSESSMENT PURPOSE ONLY.

SW1/4 SEC.35 T.26S. R.7W. W.M.  
DOUGLAS COUNTY

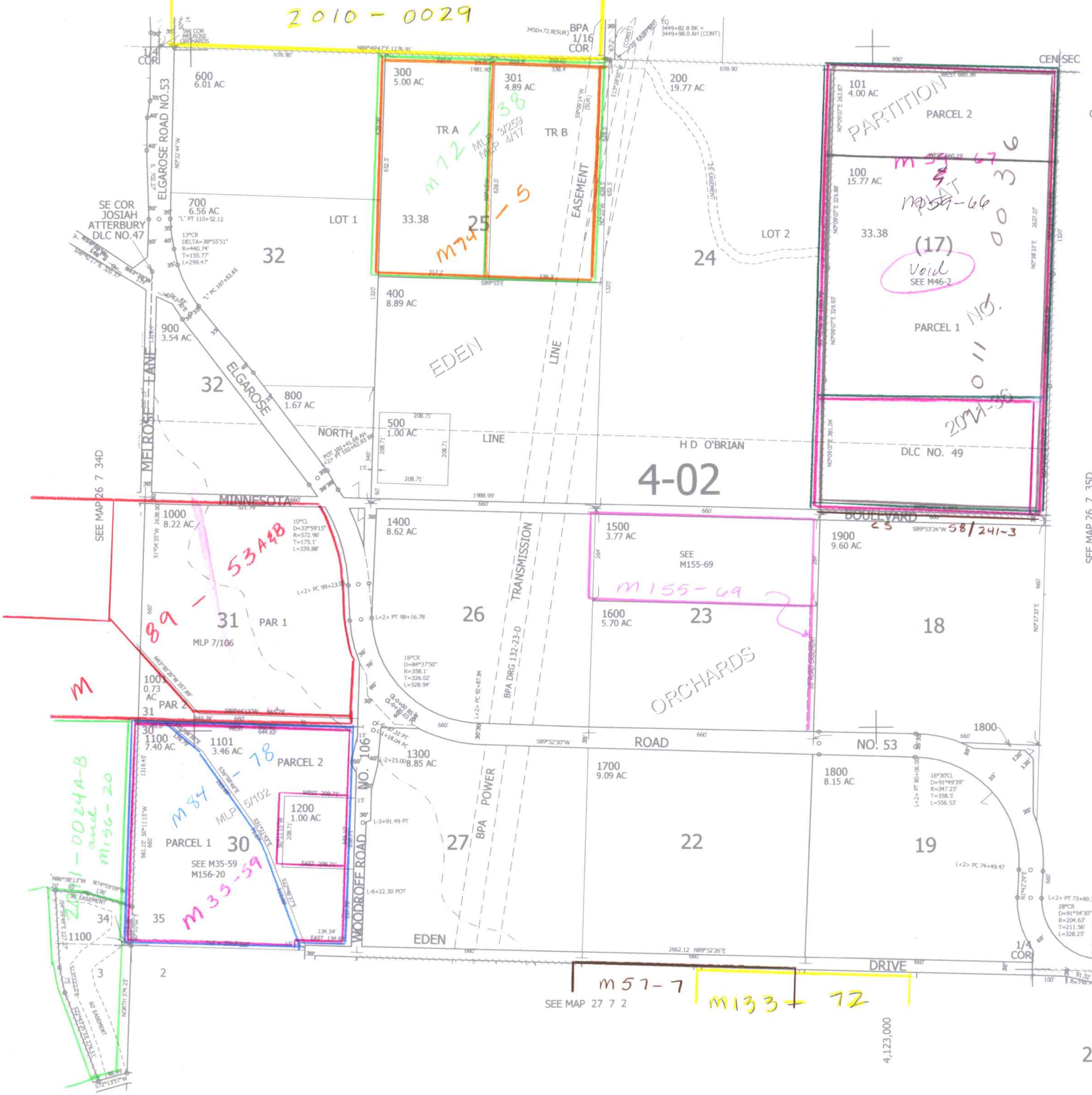
1" = 200'

REVISED ON  
1-4-12

26 7 35C

2010-0029

SEE MAP 26 7 35B



CANCELLED NO'S

SEE MAP 26 7 35D

595,000

SEE MAP 27 7 2

4,123,000

AM  
8/24/11

26 7 35C