

THIS MAP WAS PREPARED FOR ASSESSMENT PURPOSE ONLY.

SE1/4 SEC.34 T.26S. R.7W. W.M. DOUGLAS COUNTY

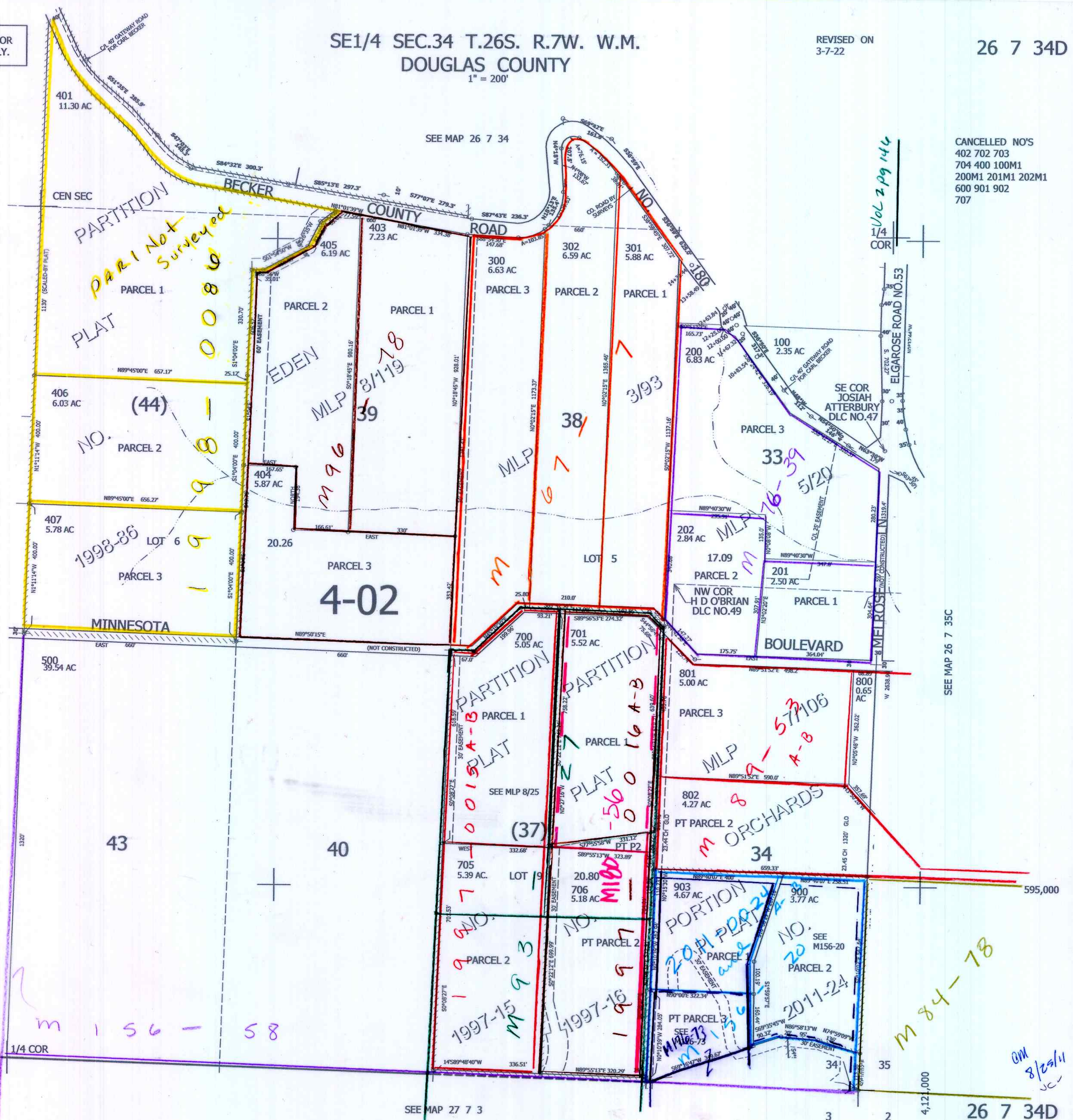
1" = 200'

REVISED ON 3-7-22

26 7 34D

SEE MAP 26 7 34

CANCELLED NO'S
402 702 703
704 400 100M1
200M1 201M1 202M1
600 901 902
707



SEE MAP 26 7 34

SEE MAP 26 7 35C

SEE MAP 27 7 3

26 7 34D

Vol 2 pg 144
1/4 COR

M 84-78

OM
8/29/11

PARCEL 1
PARTITION
PLAT
PART 1 Not Surveyed

NO. (44)
PARCEL 2

1998-86
LOT 6
PARCEL 3

EDEN
MLP 8/119
39

4-02
PARCEL 3

MLP 38
67

PARTITION
PLAT
A-B

PLAT
A-B
560

MLP
A-B
57106

M ORCHARDS
34

PORTION
PLAT
A-B

NO. 20
PARCEL 2
2011-24

M 156-58

1997-15
M 93

1997-16
M 99

M 116-73
M 136

4,12,000