

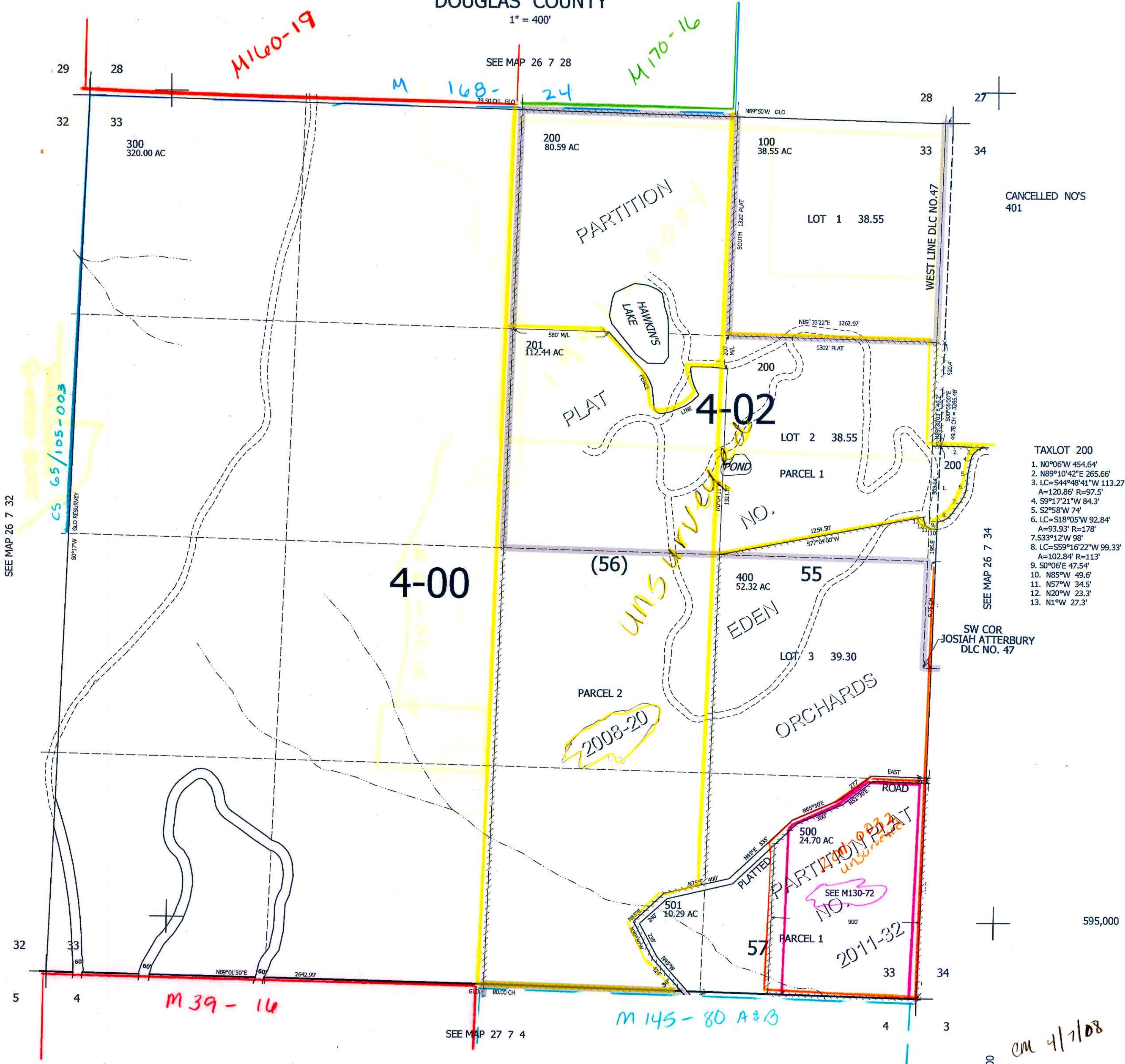
THIS MAP WAS PREPARED FOR ASSESSMENT PURPOSE ONLY.

SEC.33 T.26S. R.7W. W.M.
DOUGLAS COUNTY

REVISED ON
11-17-11

26 7 33

1" = 400'



CANCELLED NO'S
401

- TAXLOT 200
1. N0°06'W 454.64'
 2. N89°10'42"E 265.66'
 3. LC=S44°48'41"W 113.27'
A=120.86' R=97.5'
 4. S9°17'21"W 84.3'
 5. S2°58'W 74'
 6. LC=S18°05'W 92.84'
A=93.93' R=178'
 7. S33°12'W 98'
 8. LC=S59°16'22"W 99.33'
A=102.84' R=113'
 9. S0°06'E 47.54'
 10. N85°W 49.6'
 11. N57°W 34.5'
 12. N20°W 23.3'
 13. N1°W 27.3'

SW COR
JOSIAH ATTERBURY
DLC NO. 47

595,000

cm 4/7/08

26 7 33

4,111,000

SEE MAP 27 7 4

SEE MAP 26 7 32

SEE MAP 26 7 34

SEE MAP 26 7 28