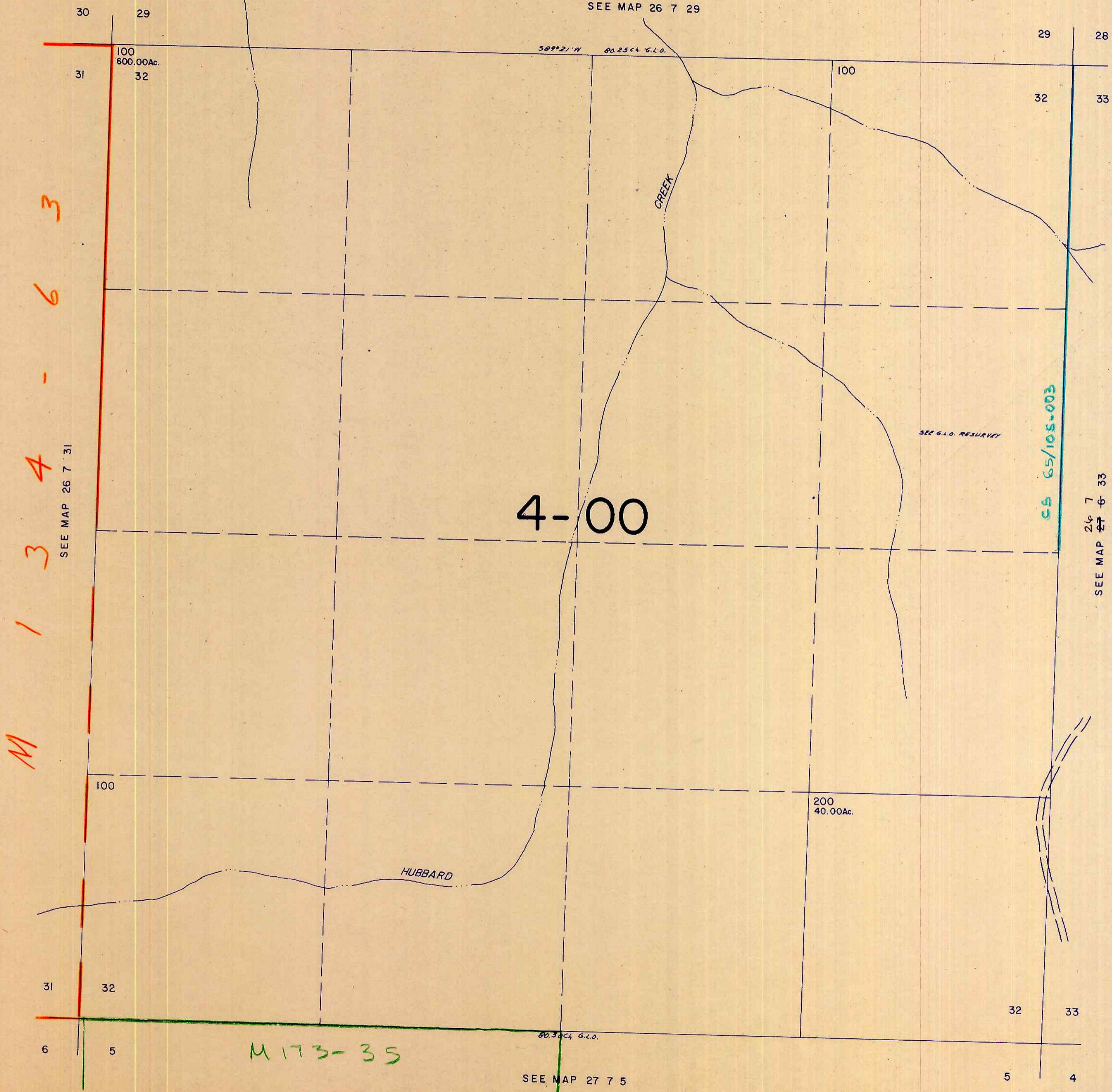


SECTION 32 T.26S. R.7W. W.M.  
DOUGLAS COUNTY

26 7 32

1" = 400'

SEE MAP 26 7 29



M 134-63

SEE MAP 26 7 31

4-00

CS 65/105-003

SEE MAP 27 6 33

M 173-35

SEE MAP 27 7 5

F.S.  
11/77

26 7 32

595,000