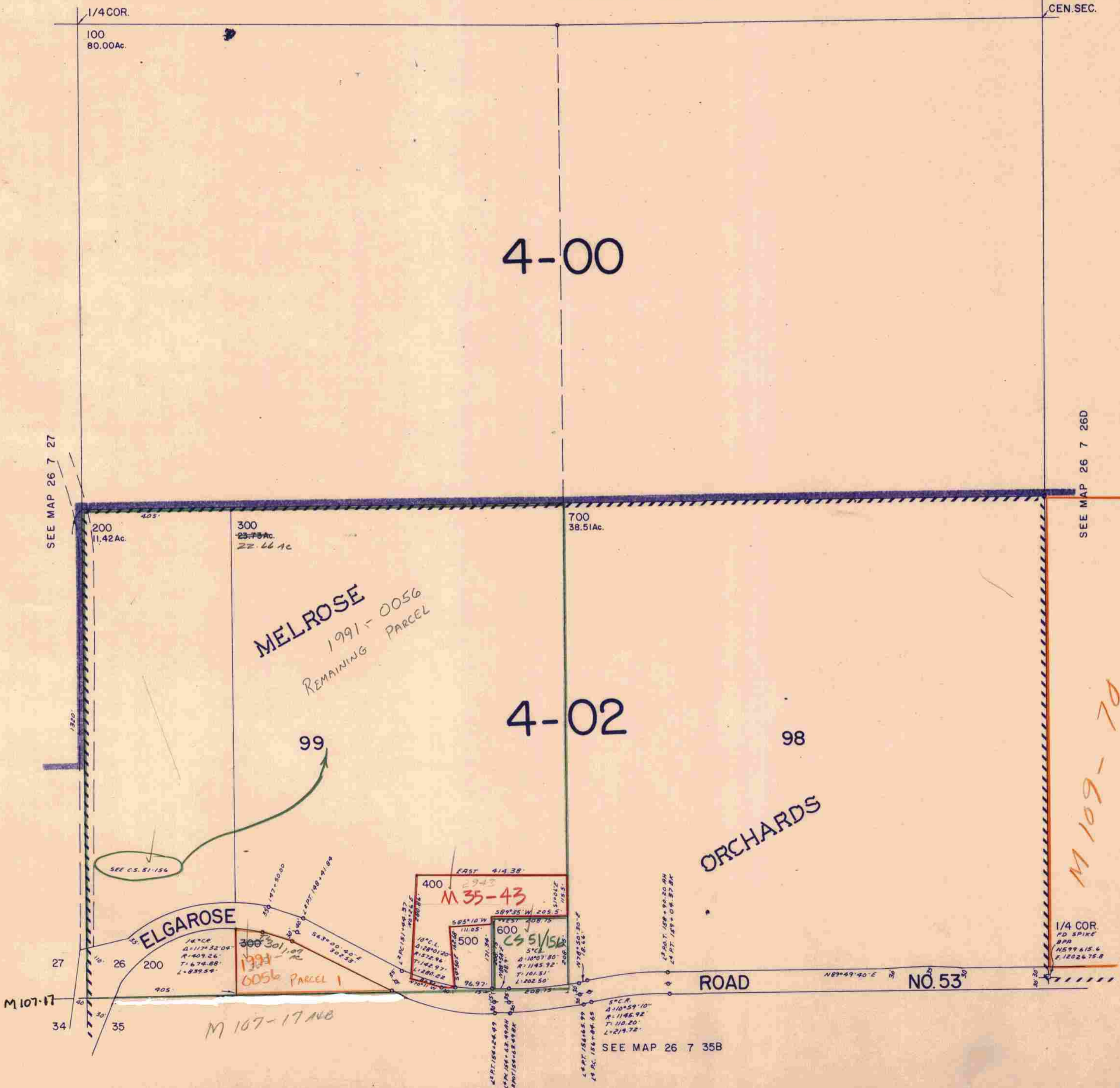


SW1/4 SEC. 26 T. 26S. R. 7W. W.M.
DOUGLAS COUNTY

26 7 26C

1" = 200'

SEE MAP 26 7 26B



SEE MAP 26 7 27

SEE MAP 26 7 26D

100
80.00Ac.

200
11.42Ac.

300
23.73Ac.
22.66Ac

700
38.51Ac.

MELROSE
1991-0056
REMAINING PARCEL

4-02

ORCHARDS

M 109-70

ELGAROSE

M 35-43
CS 51/156

M 107-17 NB

SEE MAP 26 7 35B

26 7 26C

FS 11/77