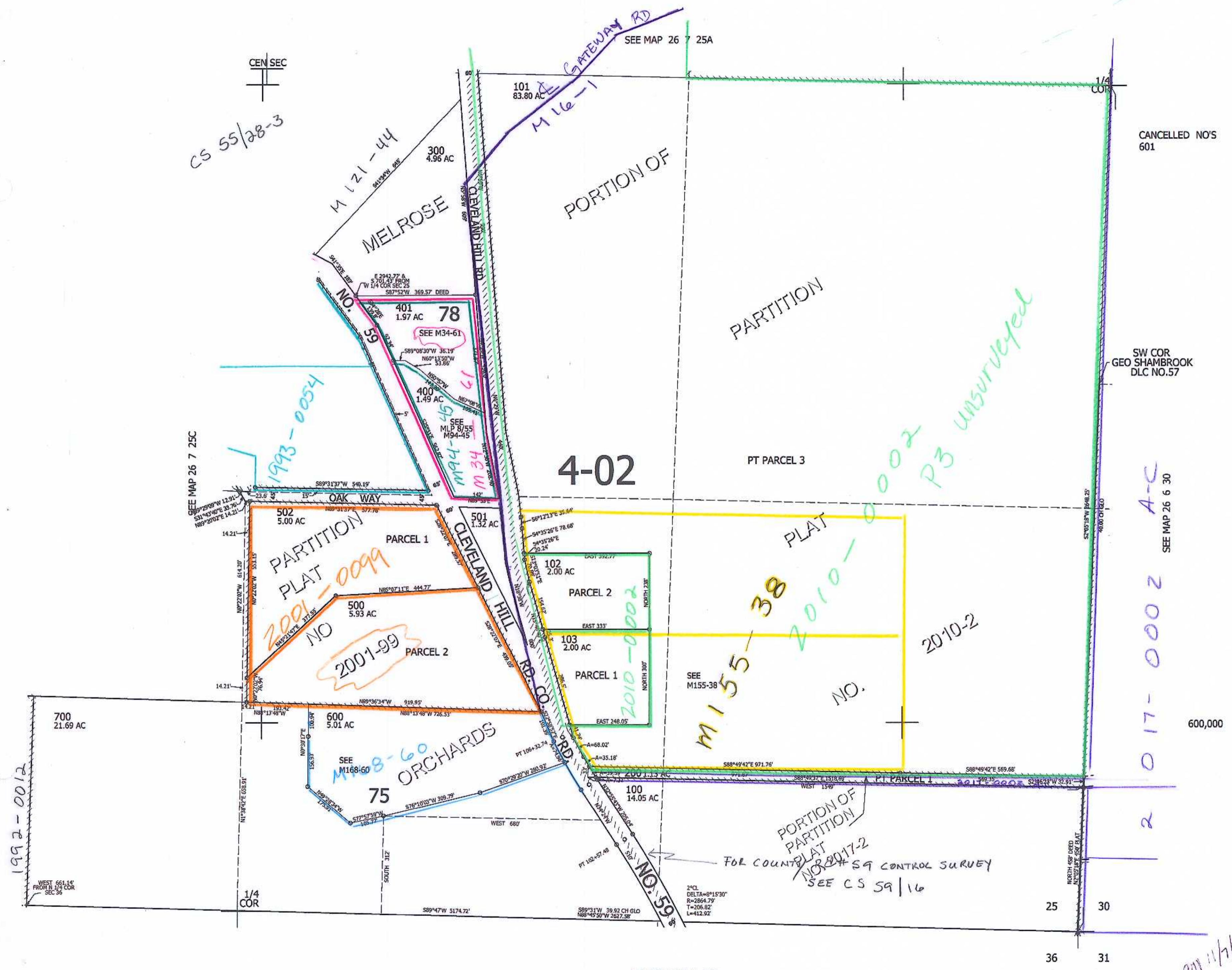


THIS MAP WAS PREPARED FOR ASSESSMENT PURPOSE ONLY.

SE1/4 SEC.25 T.26S. R.7W. W.M.
DOUGLAS COUNTY
1" = 200'

REVISED ON
2-7-17

26 7 25D



CS 55/28-3

CEN SEC

SEE MAP 26 7 25A

CANCELLED NO'S
601

SW COR
GEO SHAMBROOK
DLC NO.57

4-02

PT PARCEL 3

PARTITION
PLAT
2001-0099

M 155-38
PLAT
2010-0002

2010-2

2017-0002
A-C
SEE MAP 26 6 30

1992-0012

SEE M168-60
ORCHARDS

PORTION OF
PARTITION
PLAT
NO. 2017-2
FOR COUNTY CONTROL SURVEY
SEE CS 59/16

SEE MAP 26 7 36A

4,131,000

01/17/14
scv

26 7 25D