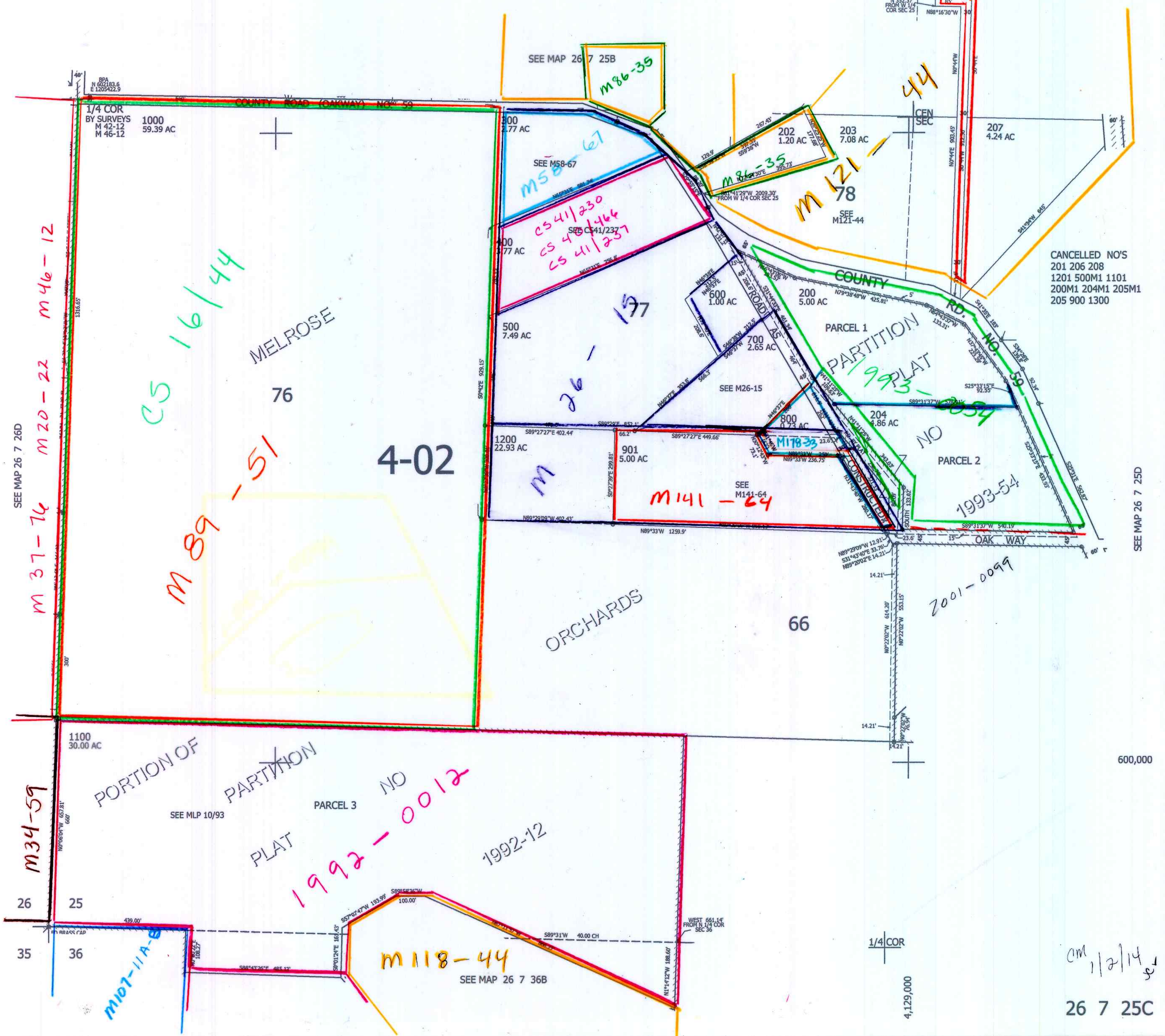


THIS MAP WAS PREPARED FOR ASSESSMENT PURPOSE ONLY.

SW1/4 SEC.25 T.26S. R.7W. W.M. DOUGLAS COUNTY
1" = 200'

REVISED ON 10-27-14

26 7 25C



CANCELLED NO'S
201 206 208
1201 500M1 1101
200M1 204M1 205M1
205 900 1300

cm 1/2/14

26 7 25C