

THIS MAP WAS PREPARED FOR ASSESSMENT PURPOSE ONLY.

NE1/4 SEC.25 T.26S. R.7W. W.M.  
DOUGLAS COUNTY  
1" = 200'

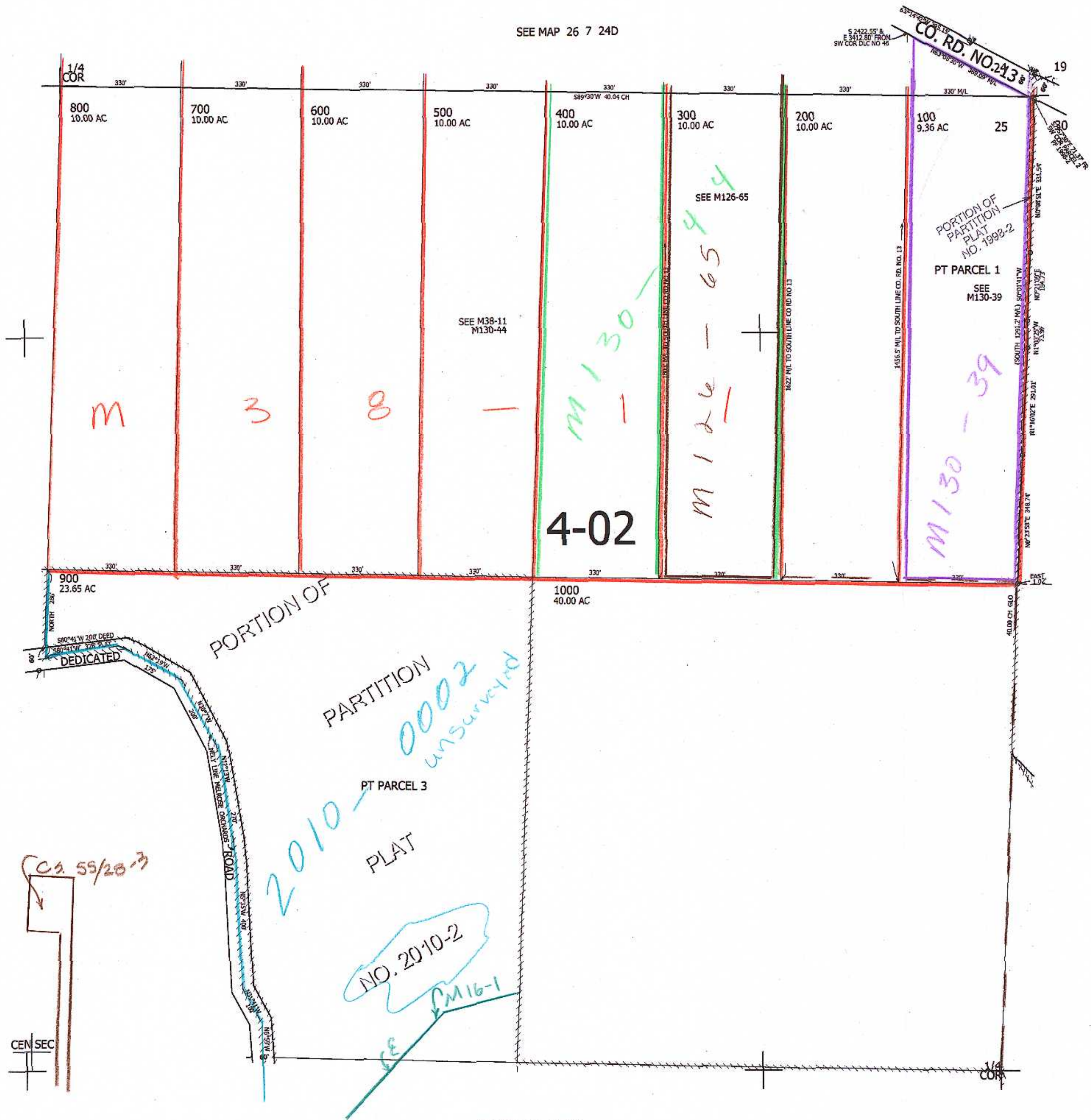
REVISED ON  
10-27-14

26 7 25A

SEE MAP 26 7 24D

SEE MAP 26 7 25B

SEE MAP 26 6 30



CANCELLED NO'S

CEN SEC

SEE MAP 26 7 25D

4,131,000

602,000

CMH  
4/2/15  
sw

26 7 25A