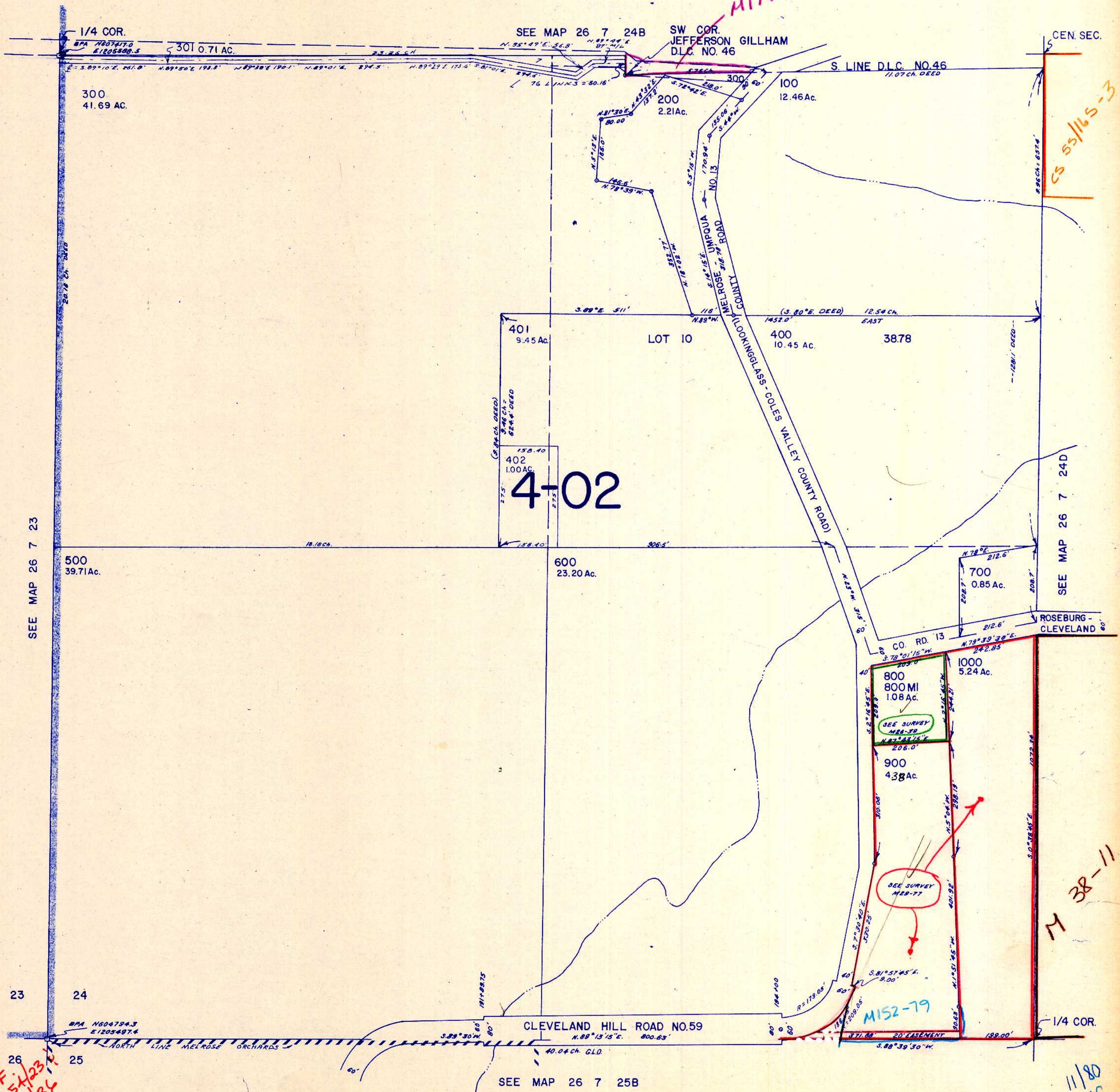


SW 1/4 SEC. 24 T.26S. R.7W. W.M.
DOUGLAS COUNTY

26 7 24C

1" = 200'



SEE MAP 26 7 23

SEE MAP 26 7 24D

SEE MAP 26 7 25B

N.F.
C.S. 54/23
G1/34

C.S. 55/165-3

M 38-11

11/80
df

26 7 24C

CONTROL II 2176 LAYOUT OF 20176 TRACED N-76 S/C CHECKED