

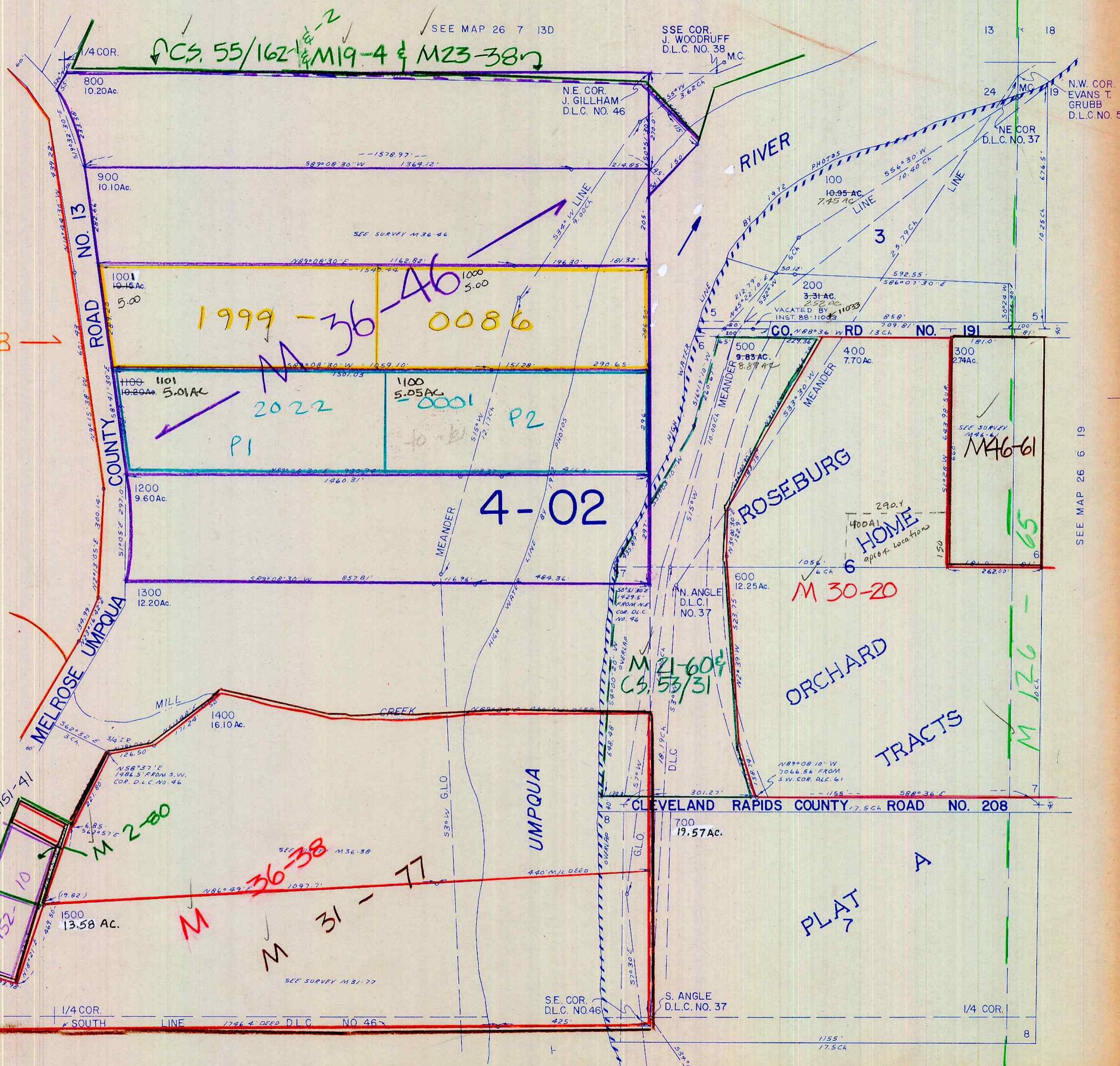
NE 1/4 SEC. 24 T.26S. R.7W. W.M.
DOUGLAS COUNTY

26 7 24A

THIS MAP WAS PREPARED FOR
ASSESSMENT PURPOSE ONLY.

1" = 200'

SEE MAP 26 7 13D



SEE MAP 26 7 24B

SEE MAP 26 6 19

SEE MAP 26 7 24D

26 7 24A

108