

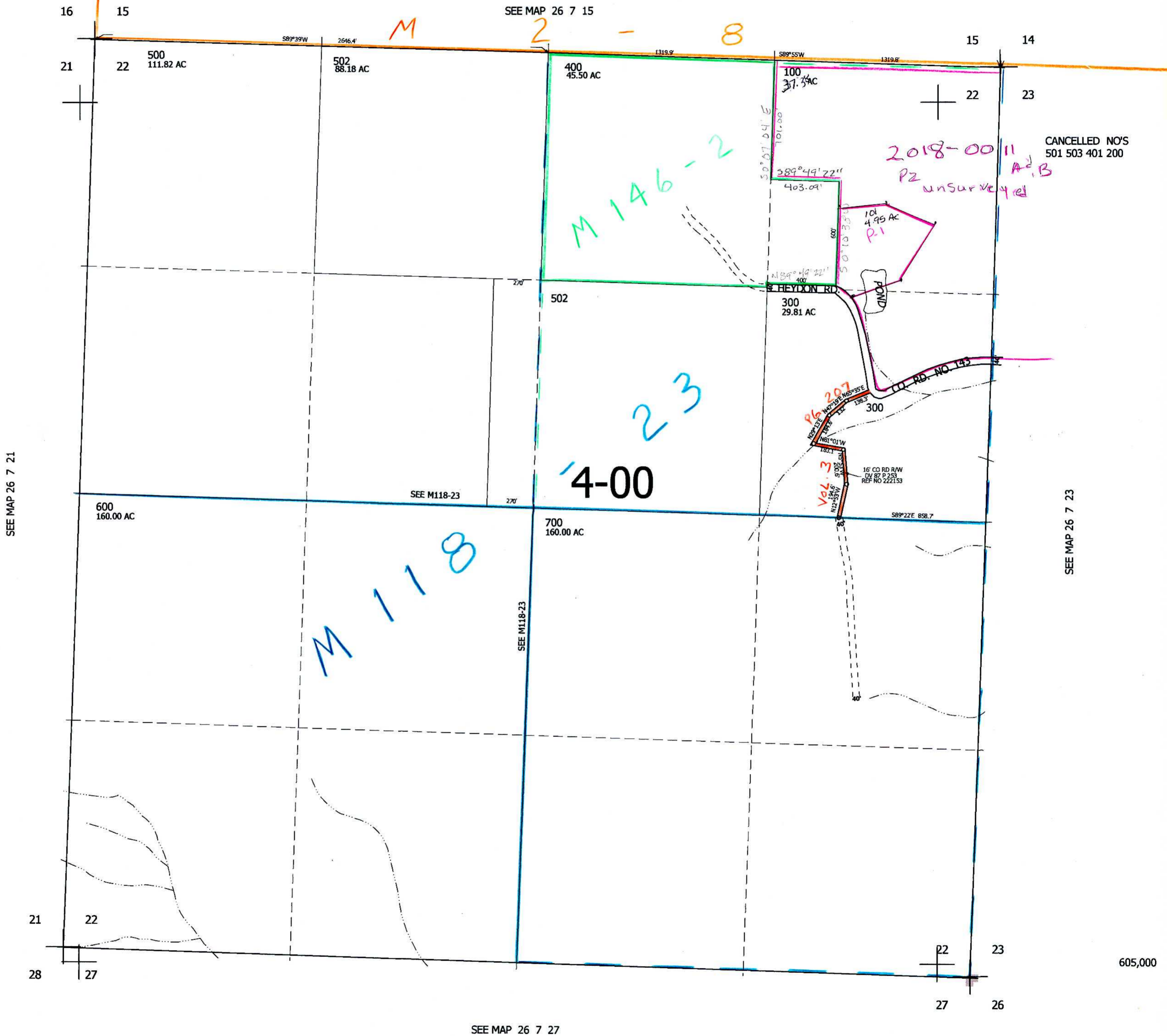
SEC.22 T.26S. R.7W. W.M.
DOUGLAS COUNTY

REVISED ON
1-8-04

26 7 22

THIS MAP WAS PREPARED FOR
ASSESSMENT PURPOSE ONLY.

1" = 400'



CANCELLED NO'S
501 503 401 200

2018-0011
P2
unsurveyed

M 146-2

23
4-00

M 118

P6
Vol. 3

P1
101
4.95 AC

SEE MAP 26 7 21

SEE MAP 26 7 23

SEE MAP 26 7 27

4,121,000

605,000

26 7 22
Dec 1/04 JP