

SECTION 21 T.26S. R.7W. W.M.  
DOUGLAS COUNTY

26 7 21

1" = 400'

SEE MAP 26 7 16

M160-20

CS 65/41 - 2

200  
520.00Ac.

200

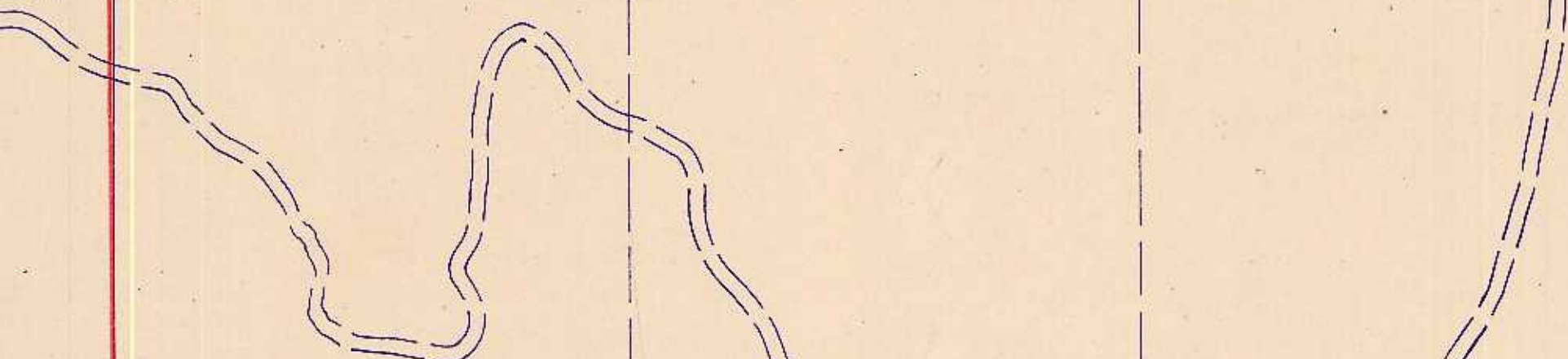
100  
80.00Ac.

20

21

21

22



M 147 - 68

SEE MAP 26 7 20

4-00

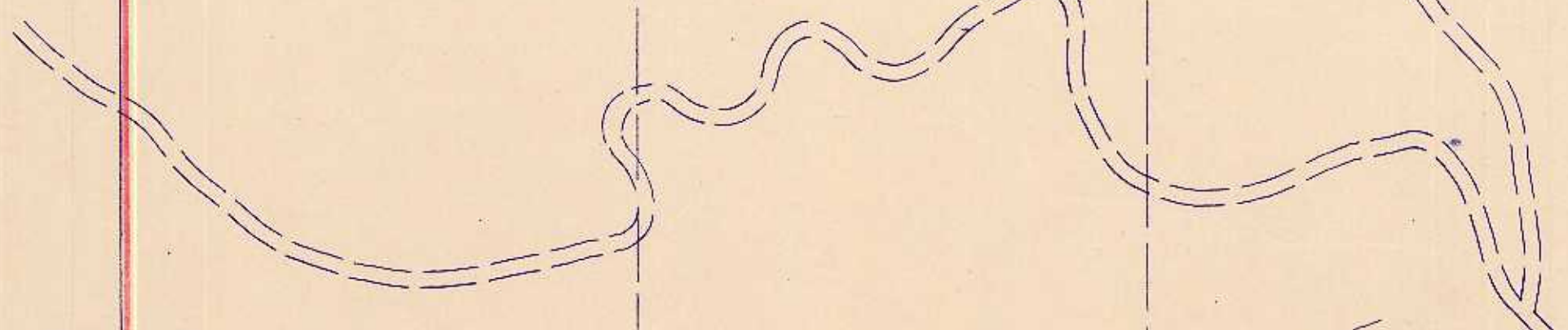
200

300  
40.00Ac.

SEE MAP 26 7 22

200

200



20

21

21

22

29

28

28

27

SEE MAP 26 7 28

M

170-68

26 7 21

F.S. 11/17