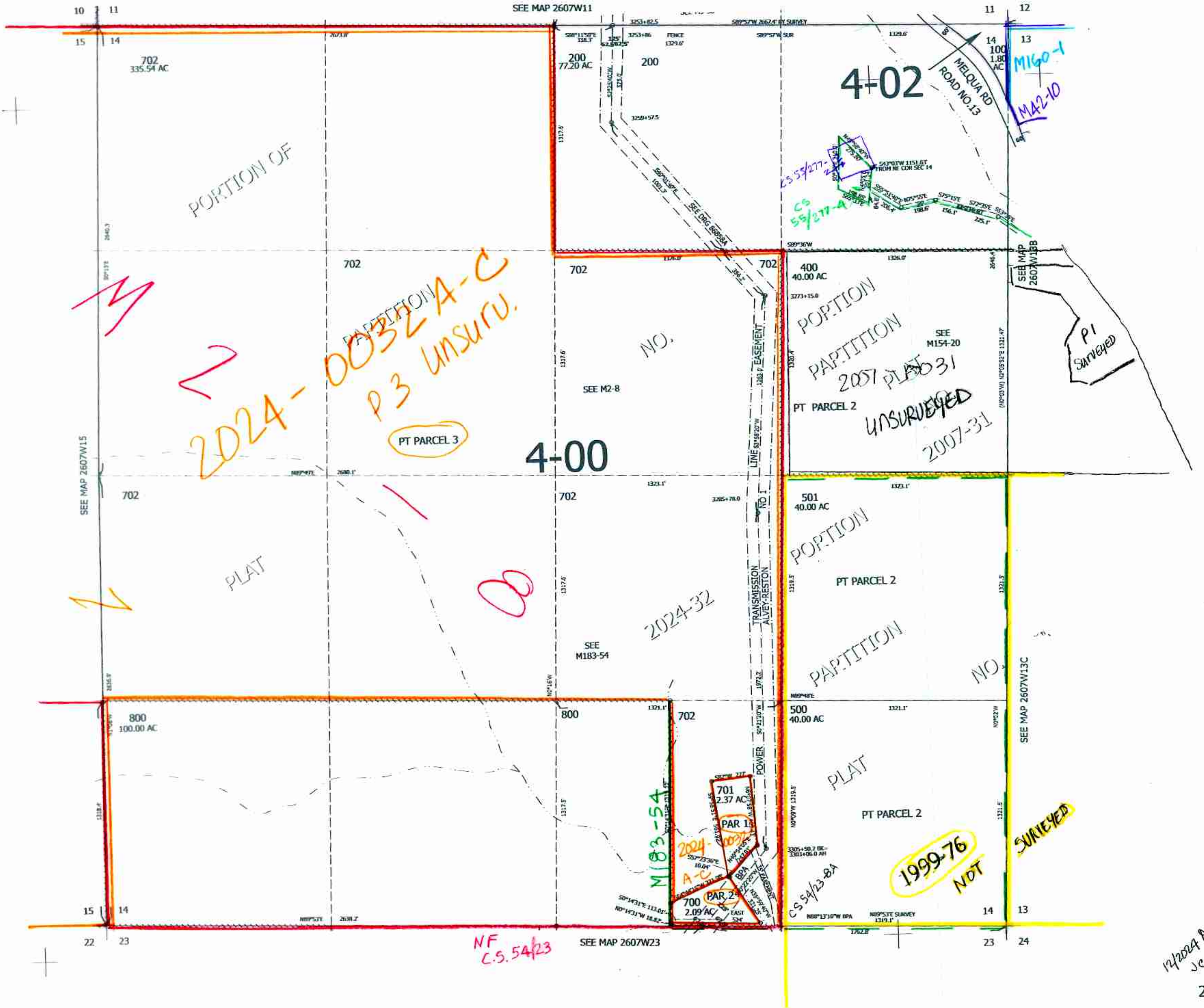


SEC.14 T.26S. R.07W. W.M.  
DOUGLAS COUNTY  
1" = 400'

THIS MAP WAS PREPARED FOR  
ASSESSMENT PURPOSE ONLY.  
Upper Left:  
123°30'39"W 43°19'5"N  
4120189E 616271N R



1/20/24  
JCL