

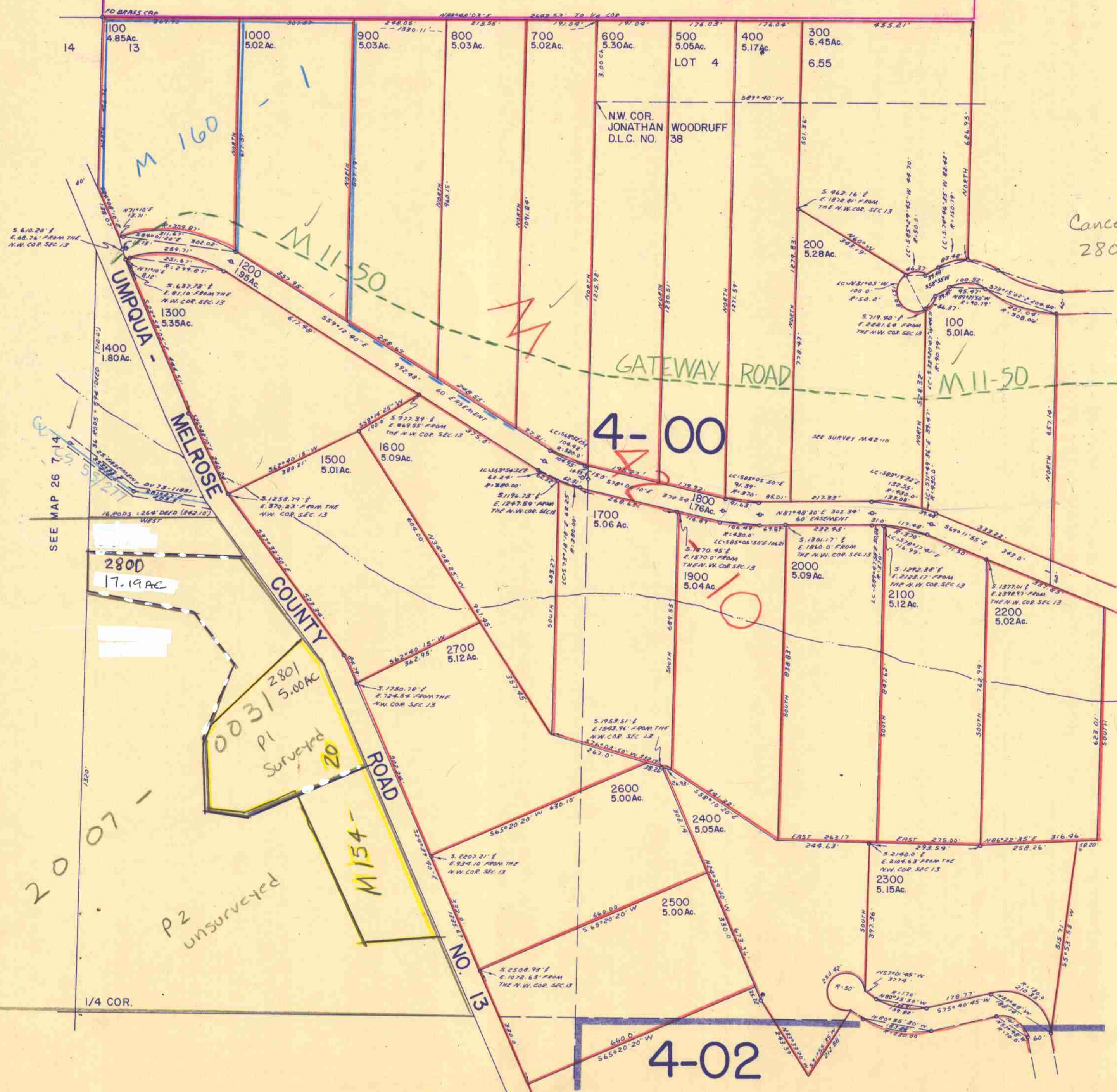
NW1/4 SEC. 13 T.26S. R.7W. W.M
DOUGLAS COUNTY

1" = 200'

M 49

SEE MAP 26 7 12 76

11 12



Cancelled Nos
2802 2803 2804

SEE MAP 26 7 14

SEE MAP 26 7 13A

1/4 COR.

SEE MAP 26 7 13C

FS 11/77