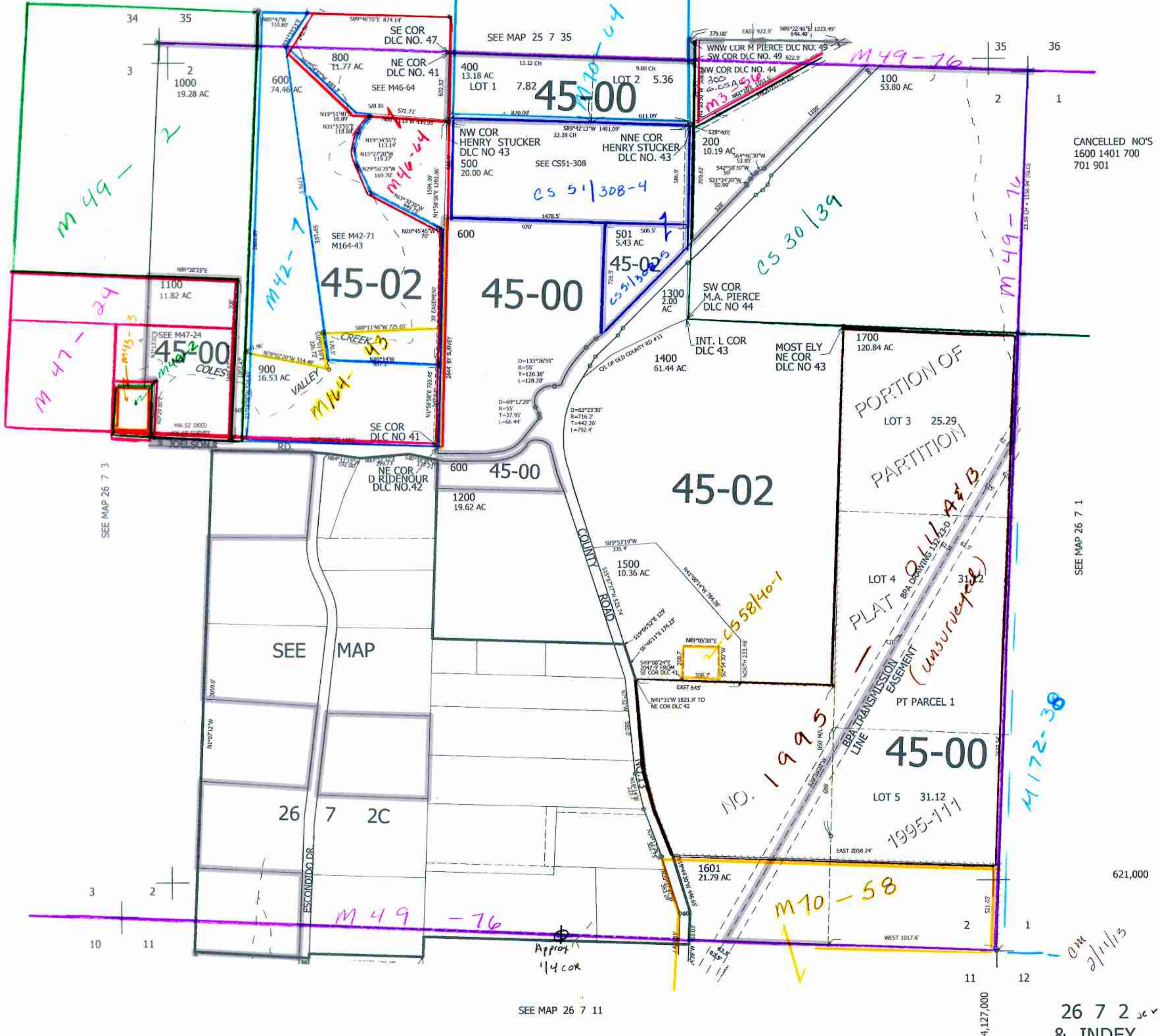


THIS MAP WAS PREPARED FOR ASSESSMENT PURPOSE ONLY.

SEC. 2 T. 26S. R. 7W. W.M. DOUGLAS COUNTY
1" = 400'

REVISED ON 12-6-12

26 7 2 & INDEX



CANCELLED NO'S
1600 1401 700
701 901

SEE MAP 26 7 1

SEE MAP 26 7 3

SEE MAP 26 7 11

26 7 2 & INDEX

4,127,000

621,000

aw 2/1/13

NO. 1995

1995-111

Approp
114 COR

M49-76

M70-58

M172-38

M49-76

CS 30/39

CS 51/308-4

45-025

45-02

45-00

45-00

M49-1

M47-24

M42-7

M164-4

M70-64

M49-76

M3

2

3

2

10

11

11

12

35

36

2

1

LOT 3 25.29

LOT 4 31.12

LOT 5 31.12

1700 120.84 AC

1400 61.44 AC

1500 10.36 AC

1601 21.79 AC

1200 19.62 AC

600 45-00

600 970

600

400 13.18 AC

800 11.77 AC

LOT 2 5.36

9.00 CH

13.32 CH

11.77 AC

11.82 AC

11.82 AC

11.82 AC

11.82 AC

11.82 AC

11.82 AC

11.82 AC

11.82 AC

11.82 AC

11.82 AC

11.82 AC

11.82 AC

11.82 AC

11.82 AC

11.82 AC

11.82 AC

11.82 AC

11.82 AC

11.82 AC

11.82 AC

11.82 AC

11.82 AC

11.82 AC

11.82 AC

11.82 AC

11.82 AC

11.82 AC

11.82 AC

11.82 AC

11.82 AC

11.82 AC

11.82 AC

11.82 AC

11.82 AC