

SW1/4 SE1/4 SEC. 36 T.26S. R.6W. W.M.
DOUGLAS COUNTY

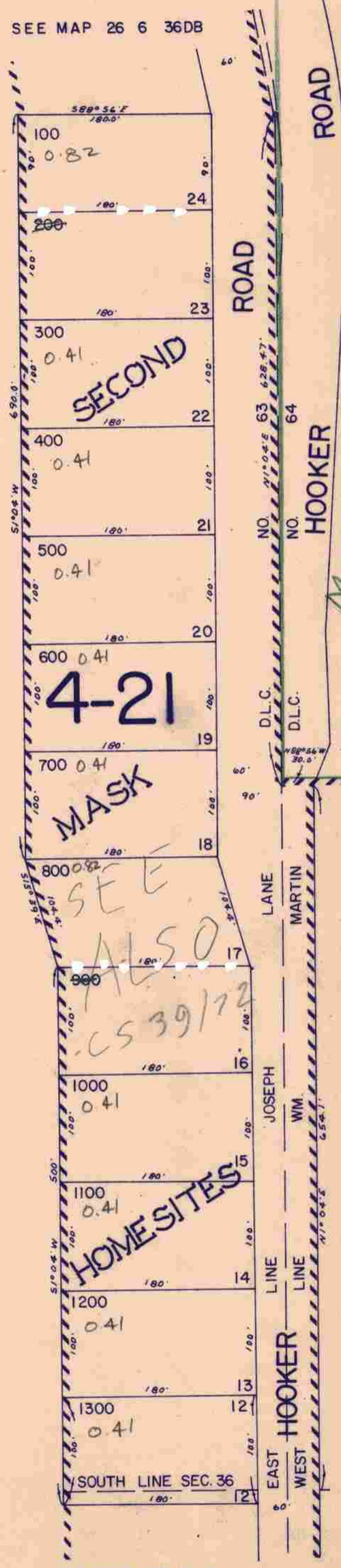
26 6 36DC

1" = 100'

APPROX.
1/4 COR.

SEE MAP 26 6 36DB

SEE MAP 26 6 36



Cancelled
200
900

M 20-66

SEE MAP 26 6 36DD

APPROX.
1/4 COR.

SEE MAP 27 6 1

26 6 36DC

CONTROL, PL. 1075 LAYOUT, 80 472 TRACED, 1116 CHECKED, 21 776

11/77
M