

THIS MAP WAS PREPARED FOR
ASSESSMENT PURPOSE ONLY.

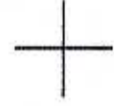
NW1/4 SE1/4 SEC.36 T.26S. R.6W. W.M.
DOUGLAS COUNTY

1" = 100'

REVISED ON
3-11-10

26 6 36DB

CEN
SEC



1/16
COR

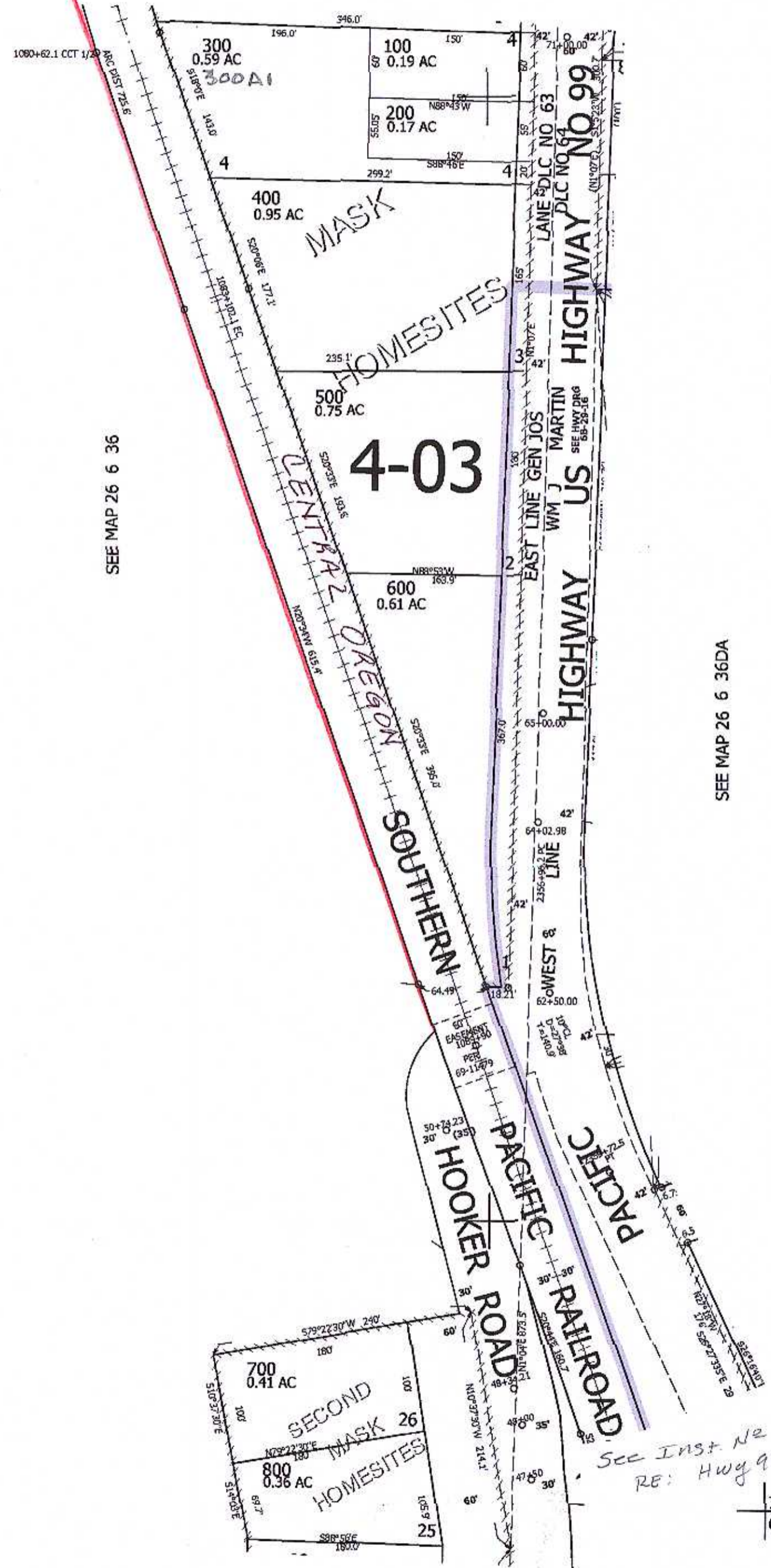
SEE MAP 26 6 36AC

1/16
COR

CANCELLED NO'S

M 30-75

SEE MAP 26 6 36



SEE MAP 26 6 36DA

594,500

See Inst. No 2001-1764
RE: Hwy 99 R/W

1/16
COR

CMW
3/17/10

SEE MAP 26 6 36DC

4,161,500

26 6 36DB