

THIS MAP WAS PREPARED FOR ASSESSMENT PURPOSE ONLY.

NE1/4 SE1/4 SEC.36 T.26S. R.6W. W.M.
DOUGLAS COUNTY

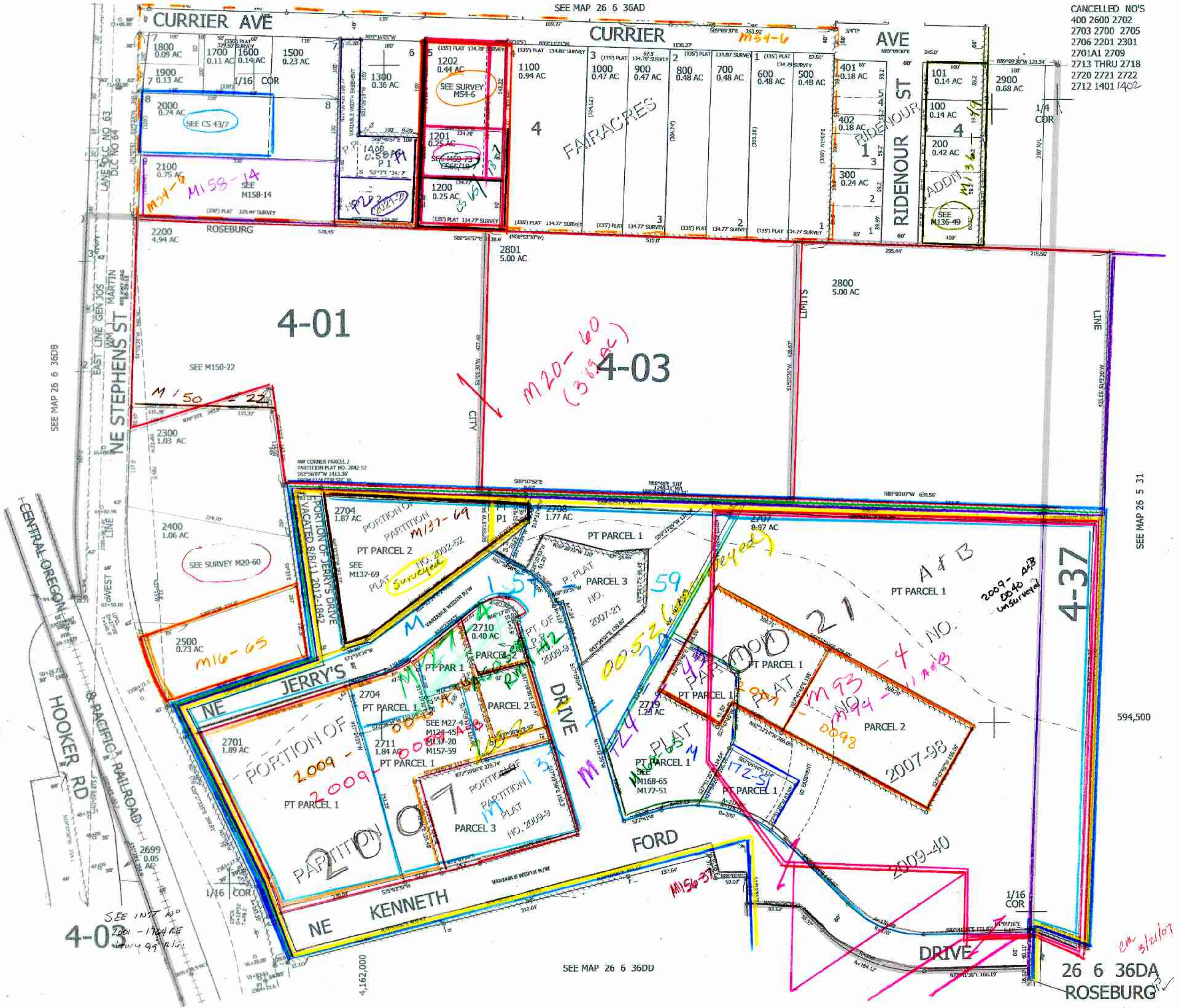
REVISED ON
6-24-21

26 6 36DA
ROSEBURG

1" = 100'

SEE MAP 26 6 36AD

CANCELLED NO'S
400 2600 2702
2703 2700 2705
2706 2201 2301
2701A1 2709
2713 THRU 2718
2720 2721 2722
2712 1401 1402



SEE MAP 26 6 36DB

SEE MAP 26 5 31

594,500

SEE MAP 26 6 36DD

26 6 36DA
ROSEBURG

am 3/21/07