

THIS MAP WAS PREPARED FOR ASSESSMENT PURPOSE ONLY.

SEE MAP 26 6 36

SW1/4 SEC.36 T.26S. R.6W. W.M.  
DOUGLAS COUNTY

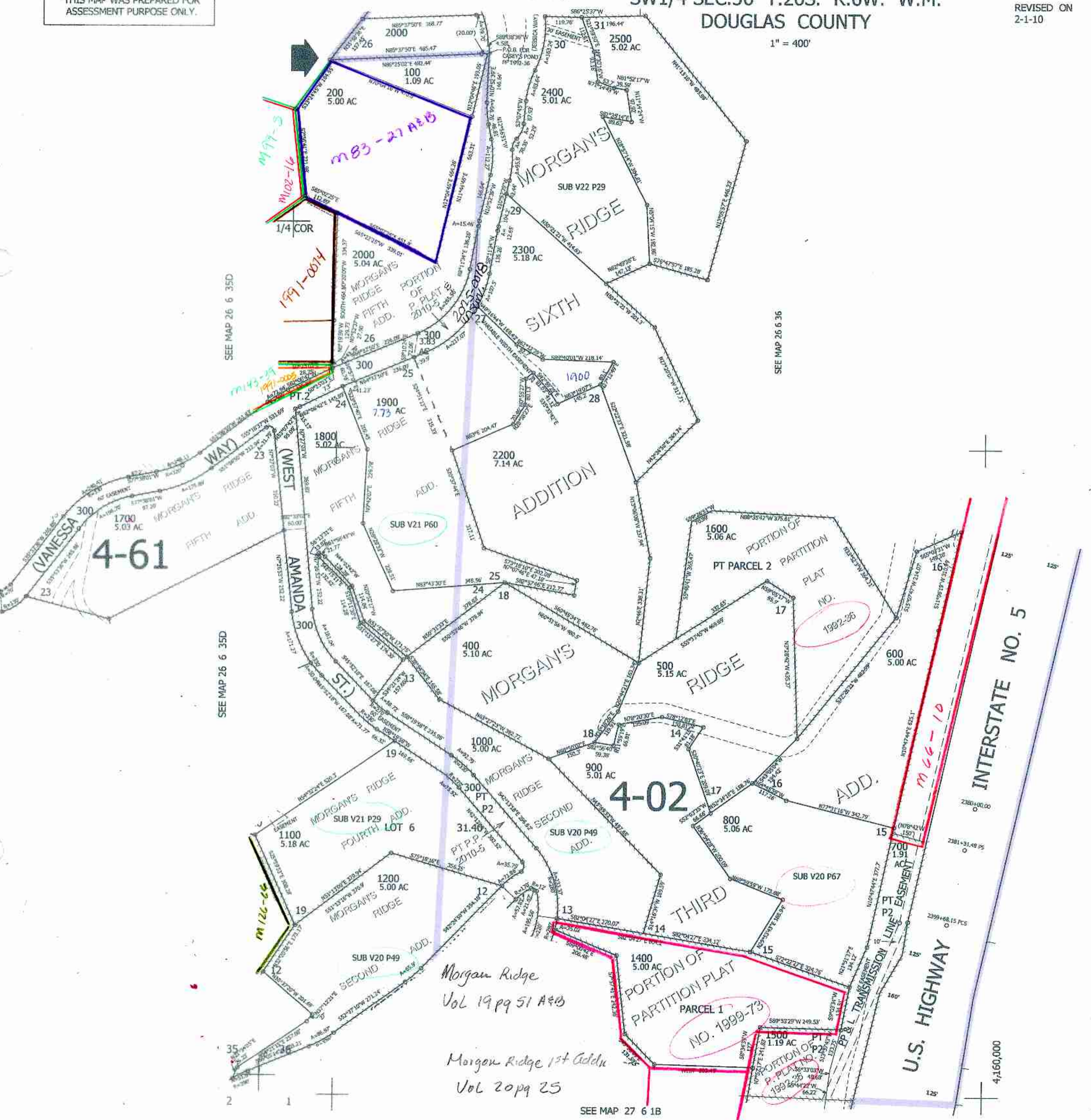
REVISED ON  
2-1-10

26 6 36C

1" = 400'

CANCELLED NO'S  
1300 301 302 2100

CEN  
SEC



SEE MAP 26 6 35D

SEE MAP 26 6 35D

SEE MAP 26 6 36

SEE MAP 26 6 36

SEE MAP 27 6 18

1/4  
COR

26 6 36C

593,000  
1/24/07