

THIS MAP WAS PREPARED FOR ASSESSMENT PURPOSE ONLY.

Upper Left:  
123°21'10"W 43°16'10"N  
4161653E 597017N R

SE1/4 NE1/4 SEC.36 T.26S. R.06W. W.M.  
DOUGLAS COUNTY  
1" = 100'

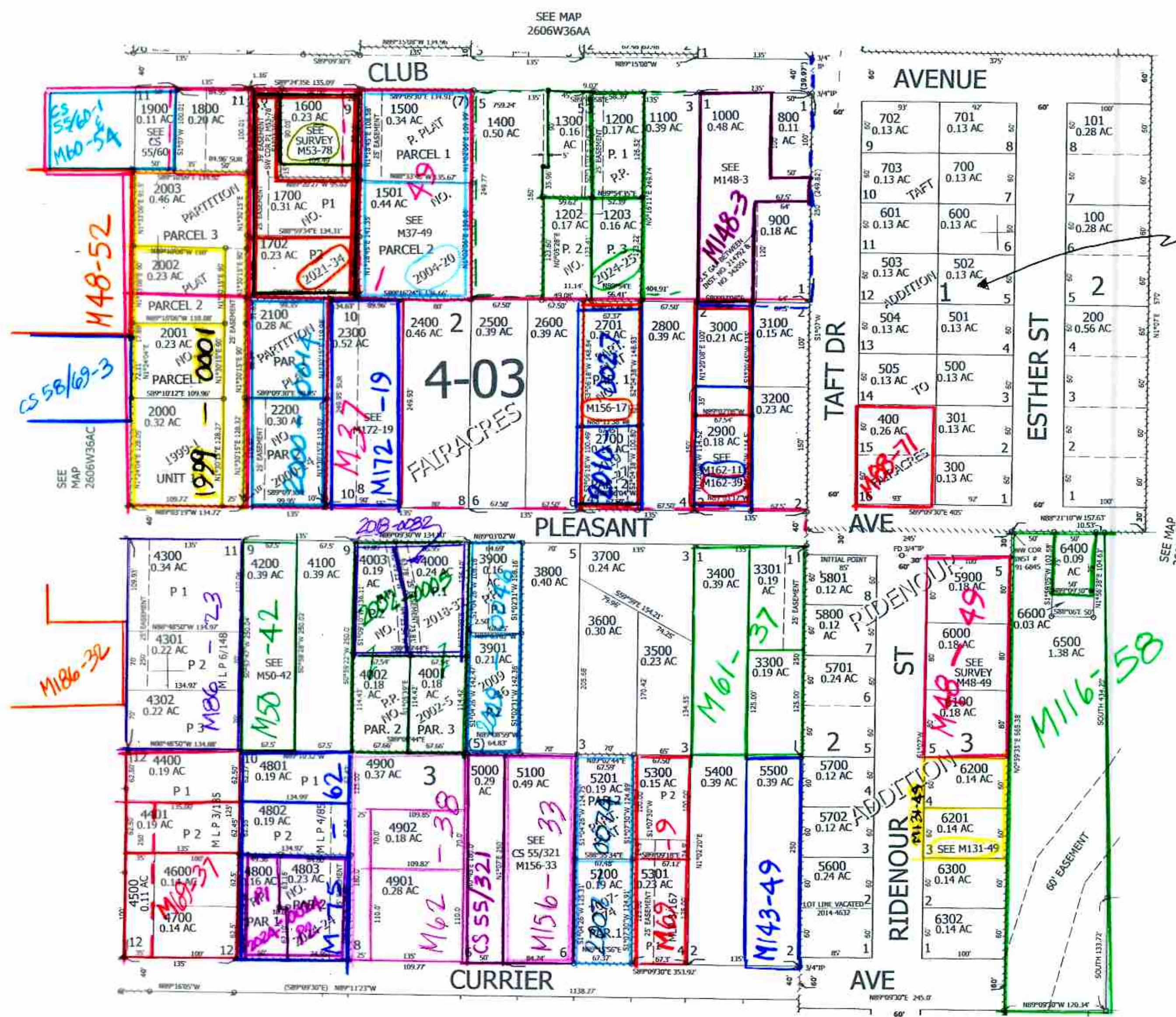
Date Exported 2024-08-29

Roseburg

CANCELLED NOS:  
6301 2101 5302  
2901 1701 1601  
1201 1301

1/16 COR

1/16 COR



SEE CS 49/465  
Woodford F.B. 20  
Pgs 15-18

4-00

SEE MAP  
2605W31

1/16 COR

1/4 COR

SEE MAP 2606W36DA

9/2024 B1

260636AD  
Roseburg

Lower Right:  
123°20'42"W 43°15'53"N  
4163630E 595297N R