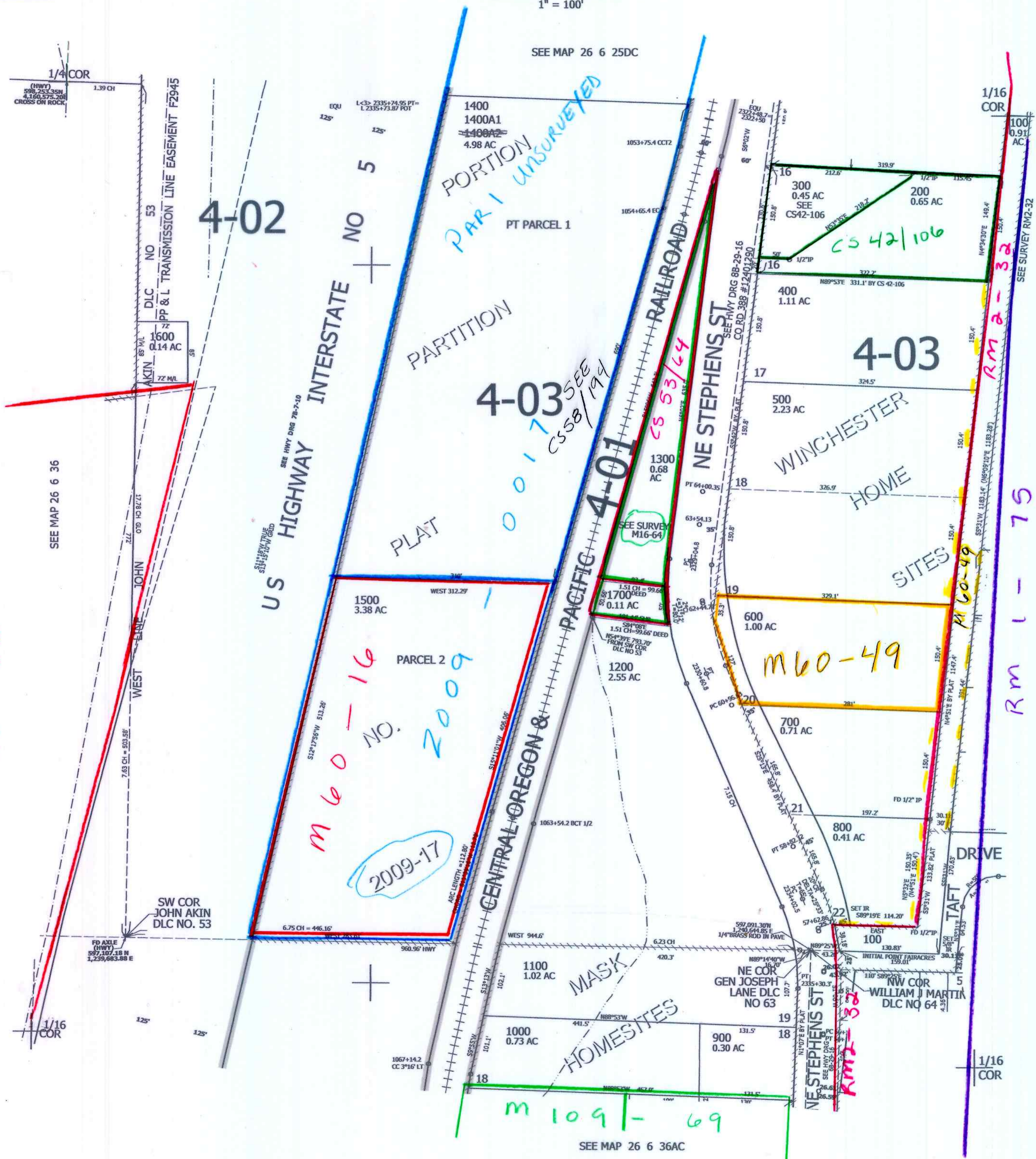


THIS MAP WAS PREPARED FOR ASSESSMENT PURPOSE ONLY.

NW1/4 NE1/4 SEC.36 T.26S. R.6W. W.M.  
DOUGLAS COUNTY  
1" = 100'

REVISED ON  
5-21-19

26 6 36AB  
ROSEBURG



CANCELLED NO'S  
1400A2

SEE MAP 26 6 36AA

597,000

cu  
3/30/16

4,162,000  
26 6 36AB  
ROSEBURG