

THIS MAP WAS PREPARED FOR ASSESSMENT PURPOSE ONLY.

SW1/4 SEC.34 T.26S. R.6W. W.M. DOUGLAS COUNTY

1" = 200'

REVISED ON 6-18-15

26 6 34C

SEE MAP 26 6 34B

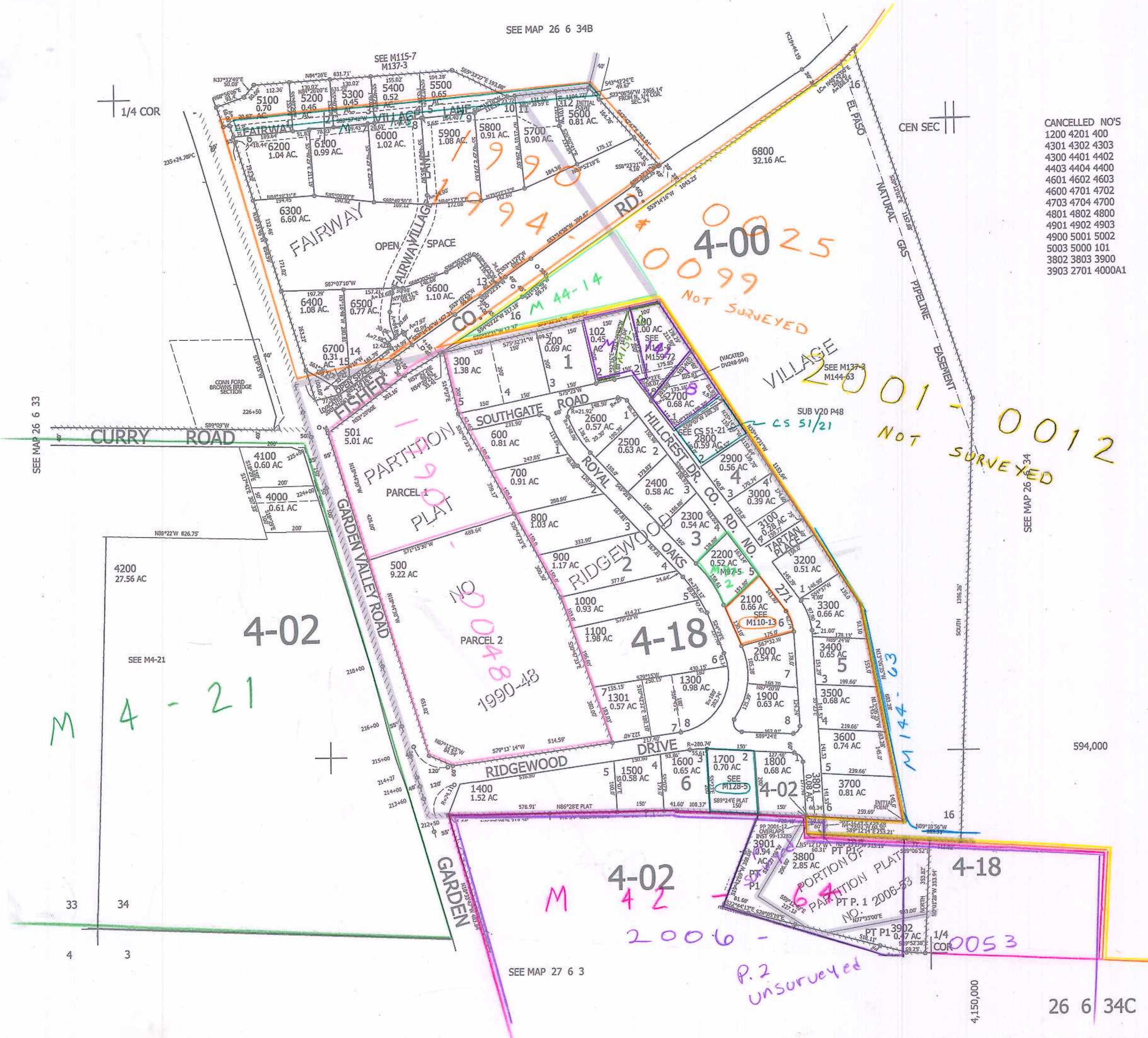
1/4 COR

CEN SEC

- CANCELLED NO'S
- 1200 4201 400
- 4301 4302 4303
- 4300 4401 4402
- 4403 4404 4400
- 4601 4602 4603
- 4600 4701 4702
- 4703 4704 4700
- 4801 4802 4800
- 4901 4902 4903
- 4900 5001 5002
- 5003 5000 101
- 3802 3803 3900
- 3903 2701 4000A1

SEE MAP 26 6 33

SEE MAP 26 6 34



594,000

4,150,000

26 6 34C