

THIS MAP WAS PREPARED FOR ASSESSMENT PURPOSE ONLY.

SW1/4 SEC.33 T.26S. R.6W. W.M.
DOUGLAS COUNTY
1" = 200'

REVISED ON
3-16-20

26 6 33C

SEE MAP 26 6 33A

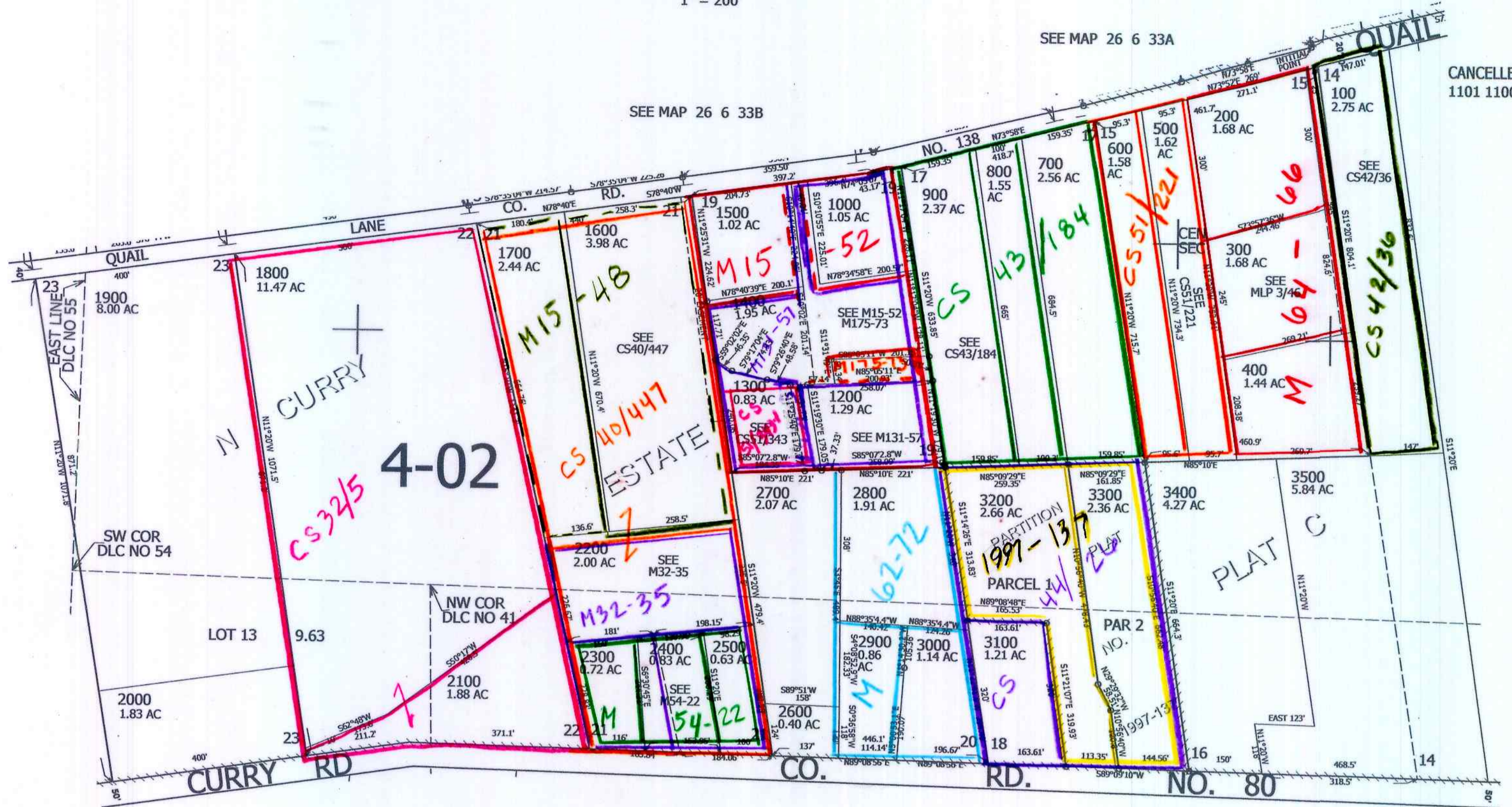
SEE MAP 26 6 33B

CANCELLED NO'S
1101 1100

1/4
COR

SEE MAP 26 6 32

SEE MAP 26 6 32



SEE MAP 26 6 33

594,000

32 33
5 4

1/4
COR

4,145,000

26 6 33C

26 6 33C
9-5-19