

THIS MAP WAS PREPARED FOR ASSESSMENT PURPOSE ONLY.

NE1/4 SEC.33 T.26S. R.6W. W.M. DOUGLAS COUNTY

REVISED ON 7-23-19

26 6 33A

1" = 200'

SEE MAP 26 6 28D

CANCELLED NO'S
401 2501 800
500 2700 701
300 201 2504
203 204 205
2505 1103 1104
207

SEE MAP 26 6 33B

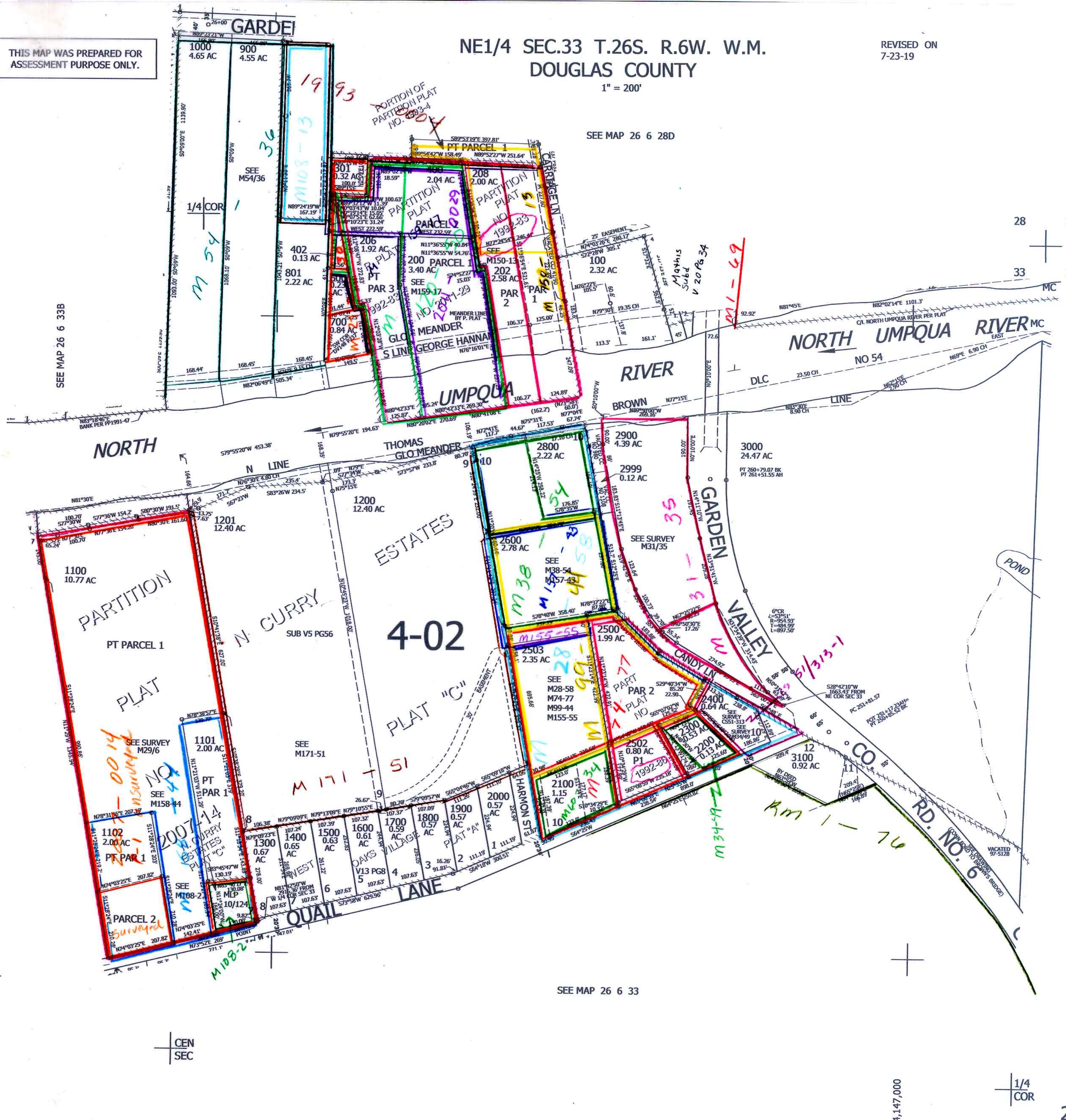
SEE MAP 26 6 34

596,500

SEE MAP 26 6 33

4,147,000

26 6 33A



CEN
SEC

1/4
COR

01/12/09