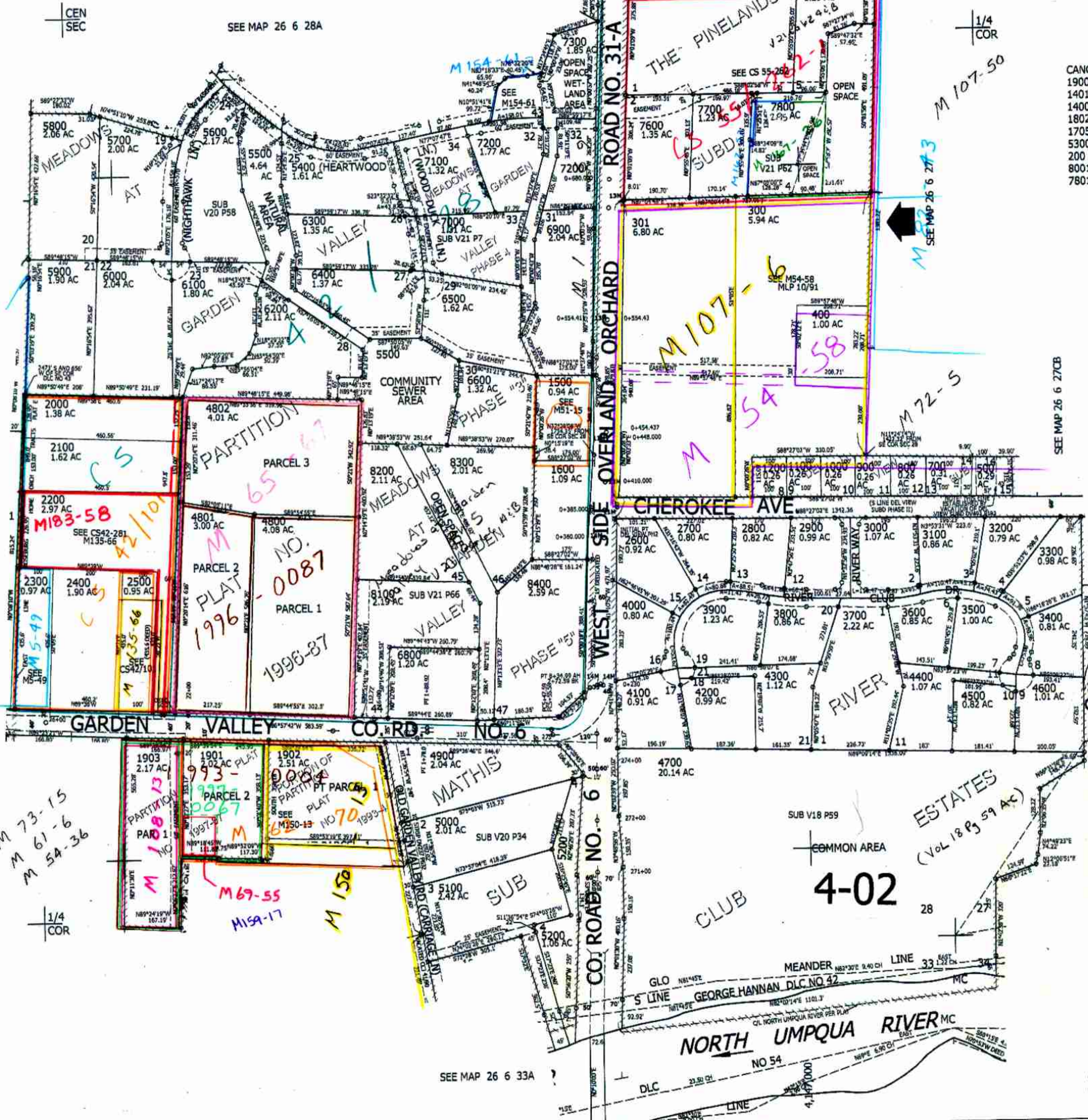


THIS MAP WAS PREPARED FOR ASSESSMENT PURPOSE ONLY.

SE1/4 SEC.28 T.26S. R.6W. W.M.
DOUGLAS COUNTY
1" = 200'

REVISED ON
3-4-14

26 6 28D



- CANCELLED NO'S
- 1900 1301 600
 - 1401 1300 1702
 - 1400 1703 1704
 - 1802 1700 1701
 - 1705 1800 1801
 - 5300 7400 100
 - 200 6700 1904
 - 8001 8500 8002
 - 7801 8000

SEE MAP 26 6 28

SEE MAP 26 6 28C
M 7-39
1997-0082

M 73-15
M 61-6
M 54-36

SEE MAP 26 6 28A

SEE MAP 26 6 28A

M 107-50
M 107-58
M 72-5

SEE MAP 26 6 27CB

SEE MAP 26 6 27CC

599,000

MATHIS SUB.
1. N74°03'26"E 45'
2. N69°31'59"E 35.36'

SEE MAP 26 6 33A

26 6 28D

7/02
nw