

THIS MAP WAS PREPARED FOR ASSESSMENT PURPOSE ONLY.

NE1/4 SEC.28 T.26S. R.6W. W.M.  
DOUGLAS COUNTY  
1" = 200'

REVISED ON  
2-8-11

26 6 28A

SEE MAP 26 6 21

21 22  
28 27

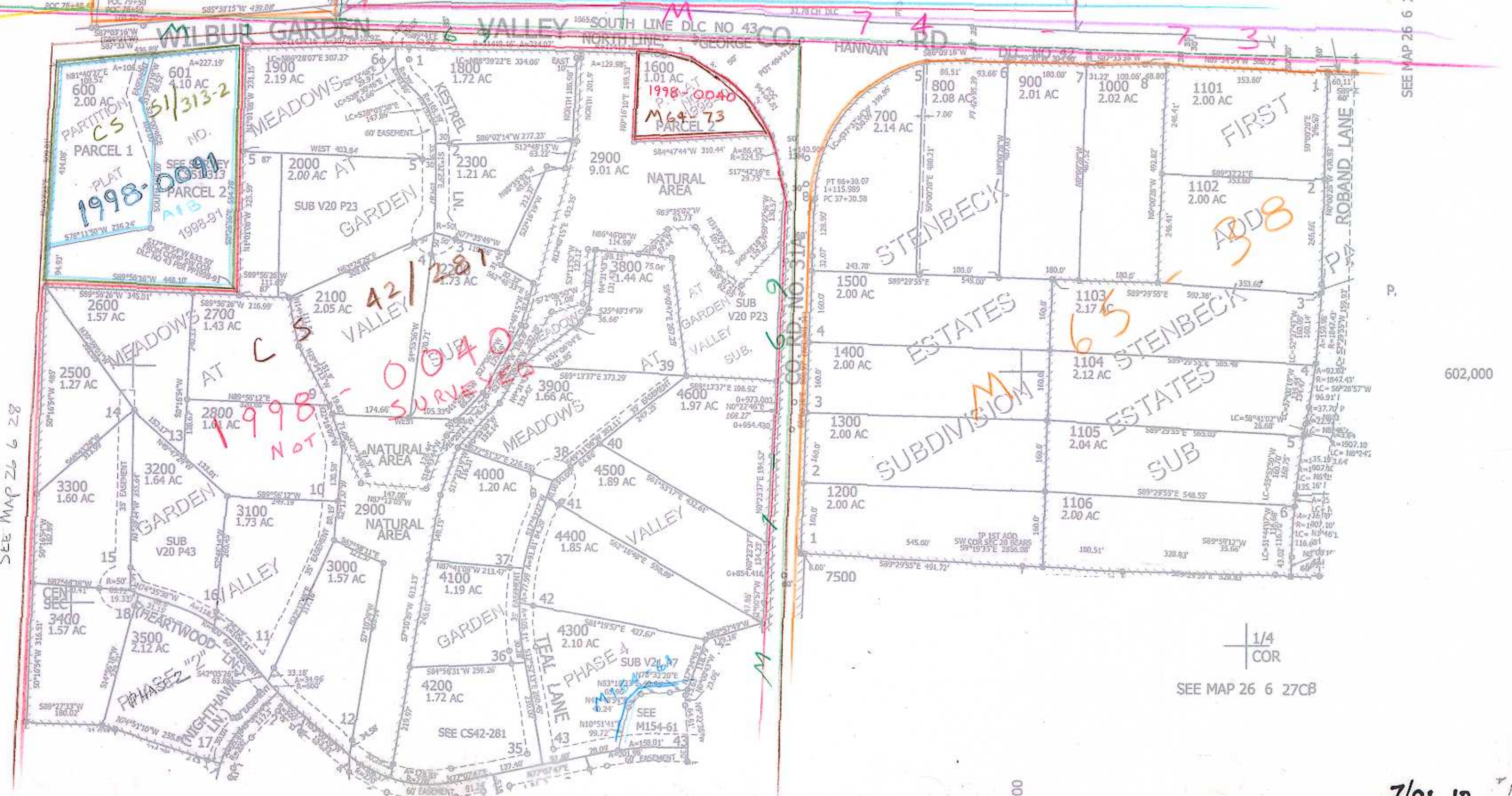
CANCELLED NO'S  
1100 701 1000  
2400 2001 101  
1700 3600 3700  
4301

PARCEL 1600  
1. LC=S89°44'37"E 42.06'  
R=11419.16' A=42.06'  
2. S89°38'16"E 15.73'  
R=276.74' A=65.04'  
3. LC=S83°08'26"E 64.89'  
R=276.74' A=65.04'  
4. S61°18'42"E 86.46'  
R=276.74' A=65.04'  
5. LC=S41°53'51"E 163.76'  
R=276.74' A=166.25'

SEE MAP 26 6 28BA  
RM 1-67 & RM 1-68  
2015-0006  
M 81-65



4-02



SEE MAP 26 6 28

SEE MAP 26 6 28

SEE MAP 26 6 27B

602,000

1/4 COR  
SEE MAP 26 6 27CB

SEE MAP 26 6 28D

17,000

7/01 JP