

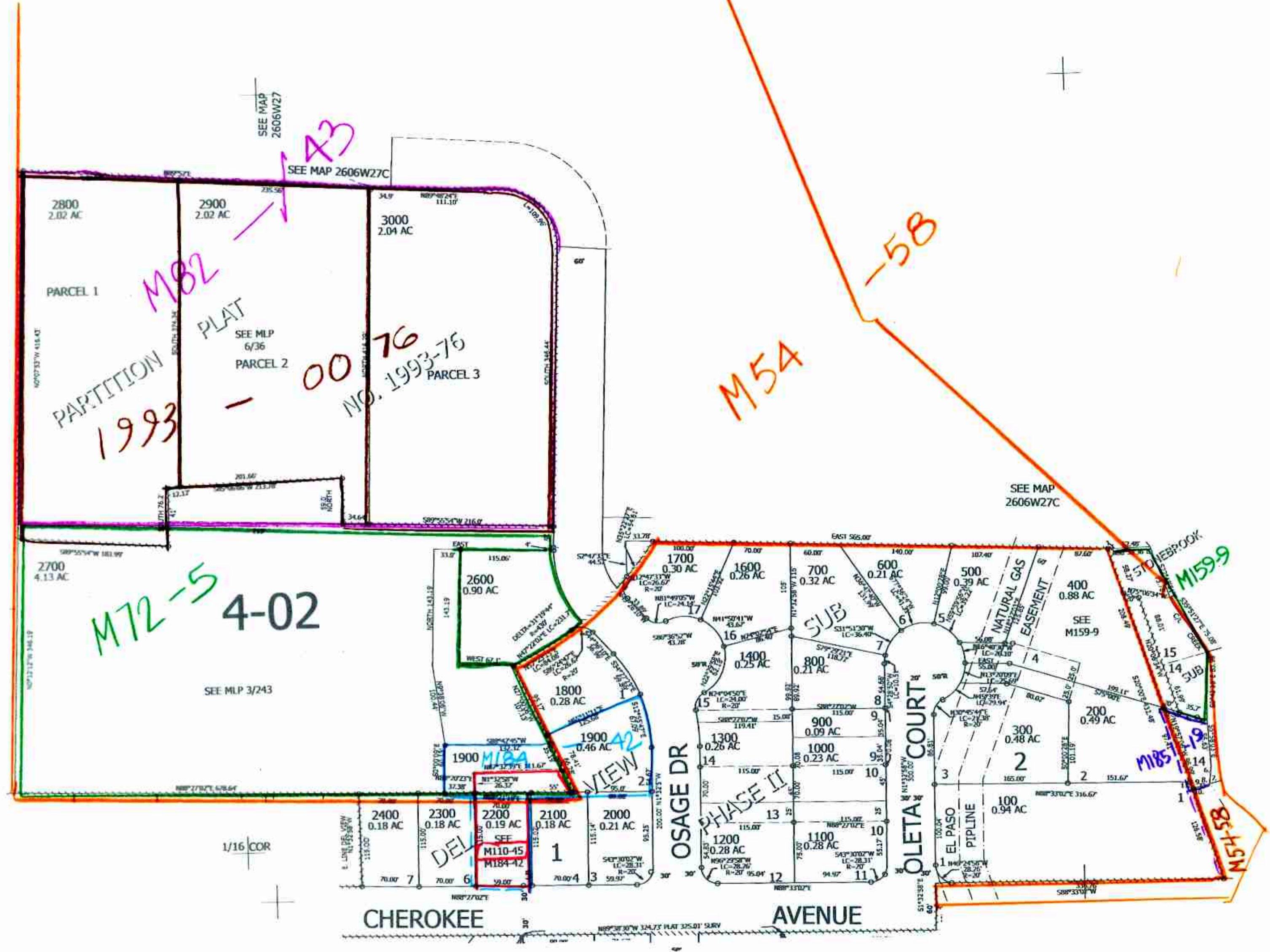
NW1/4 SW1/4 SEC.27 T.26S. R.06W. W.M.
DOUGLAS COUNTY
1" = 100'

CANCELLED NOS:
901 1500 2500
2201

THIS MAP WAS PREPARED FOR
ASSESSMENT PURPOSE ONLY.

Upper Left:
123°24'31"W 43°16'47"N
4146939E 601308N ft.

- PARCEL 200
- 1. N19°57'06"W 0.43'
- 2. S75°30'00"E 0.65'
- 3. S75°30'00"E 20.04'
- 4. S75°12'37"E 24.88'
- 5. S75°12'37"E 10.64'
- 6. S3°49'56"W 19.63'
- 7. S10°00'45"E 2.61'
- 8. S73°09'56"W 16.00'
- 9. S73°09'56"W 13.41'
- 10. S73°09'56"W 0.82'
- 11. N19°57'28"W 9.12'



SEE MAP
2606W28D

SEE MAP
2606W27

SEE MAP 2606W27C

SEE MAP
2606W27C

SEE MLP 3/243

SEE
MAP
2606W27CC

1/16 COR

1/2025
JCL

260627CB