

SE1/4 NE1/4 SEC.36 T.26S. R.6W. W.M.  
DOUGLAS COUNTY

REVISED ON  
4-29-04

26 6 36AD

1" = 100'

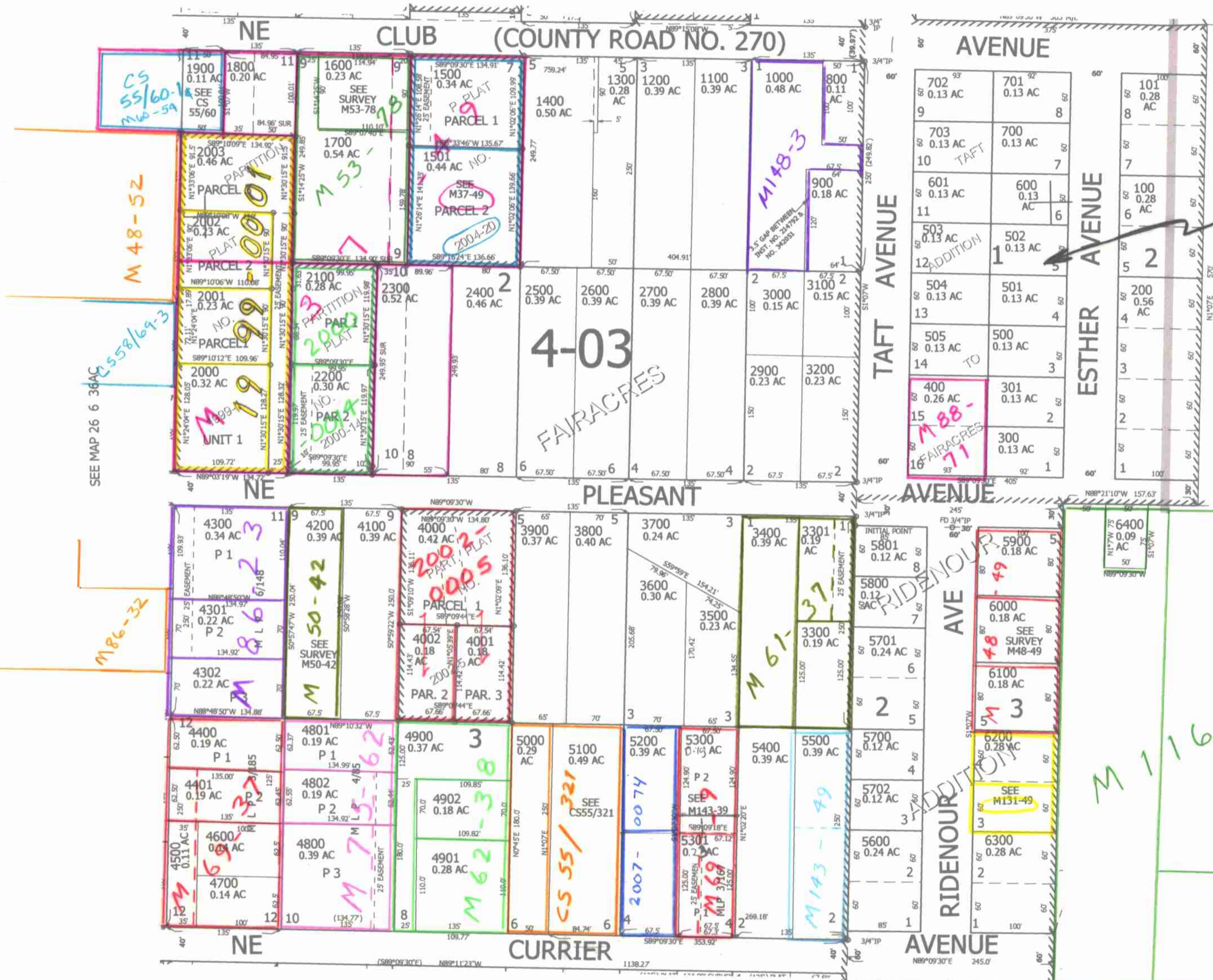
THIS MAP WAS PREPARED FOR  
ASSESSMENT PURPOSE ONLY.

1/16  
COR

1/16  
COR

SEE MAP 26 6 36AA

CANCELLED NO'S  
6301 2101



SEE CS 40/405  
WOODFORD F.B. 20  
PES. 15-18  
4-00

SEE MAP 26 6 36AC  
M 558/69-3

SEE MAP 26 5 31

1/16  
COR

1/4  
COR

SEE MAP 26 6 36DA

595,500