

THIS MAP WAS PREPARED FOR ASSESSMENT PURPOSE ONLY.

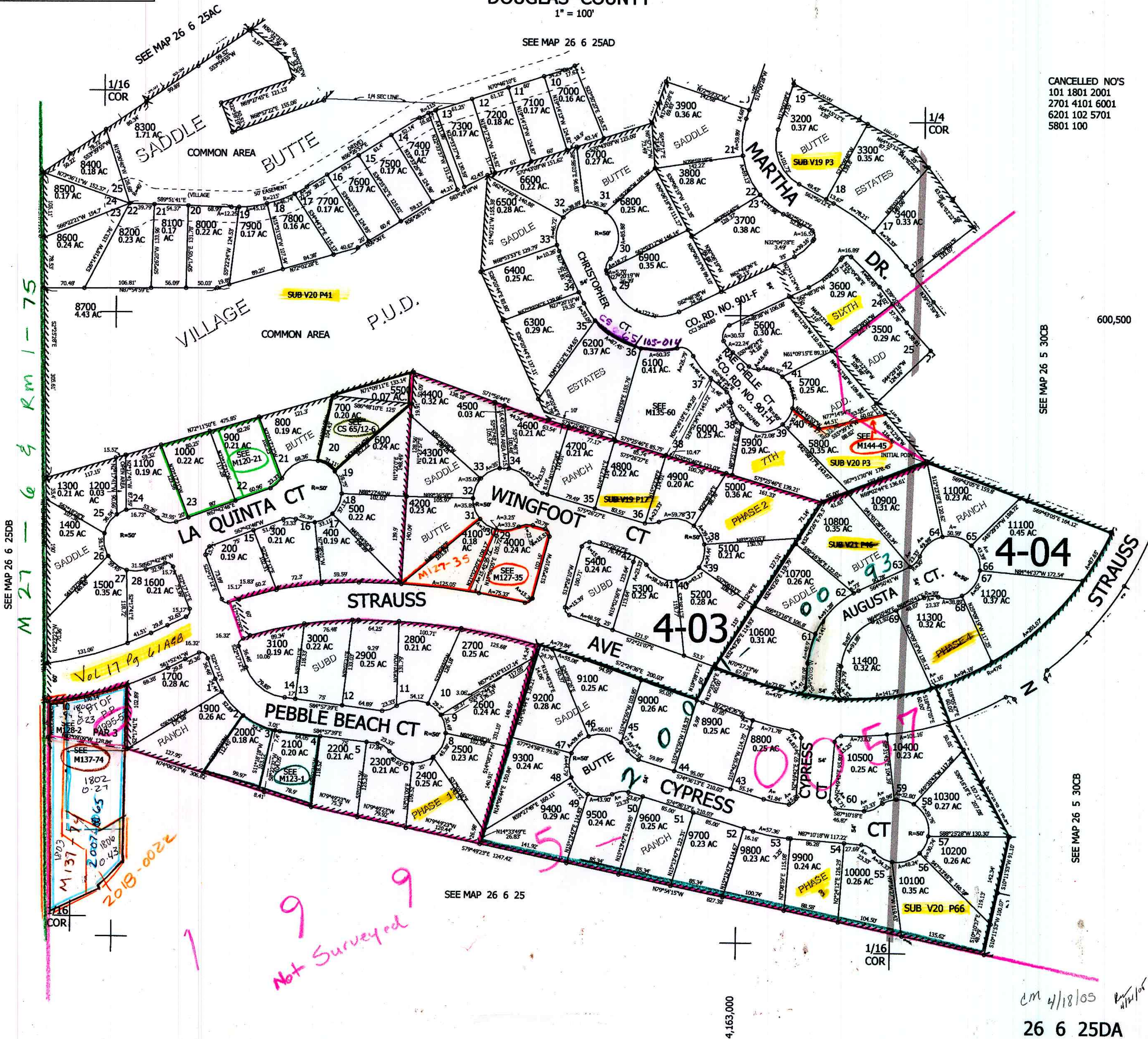
NE1/4 SE1/4 SEC.25 T.26S. R.6W. W.M.
DOUGLAS COUNTY

1" = 100'

REVISED ON
3-29-05

26 6 25DA

CANCELLED NO'S
101 1801 2001
2701 4101 6001
6201 102 5701
5801 100



SEE MAP 26 6 25DB

M 27 - 6 & Rm 1 - 75

Vol 17 Pg 61A48

1803
COR

Not Surveyed 9

SEE MAP 26 6 25

4,163,000

cm 4/18/05

26 6 25DA