

THIS MAP WAS PREPARED FOR ASSESSMENT PURPOSE ONLY.

SW1/4 NE1/4 SEC.25 T.26S. R.6W. W.M.  
DOUGLAS COUNTY

1" = 100'

REVISED ON  
5-21-19

26 6 25AC  
ROSEBURG

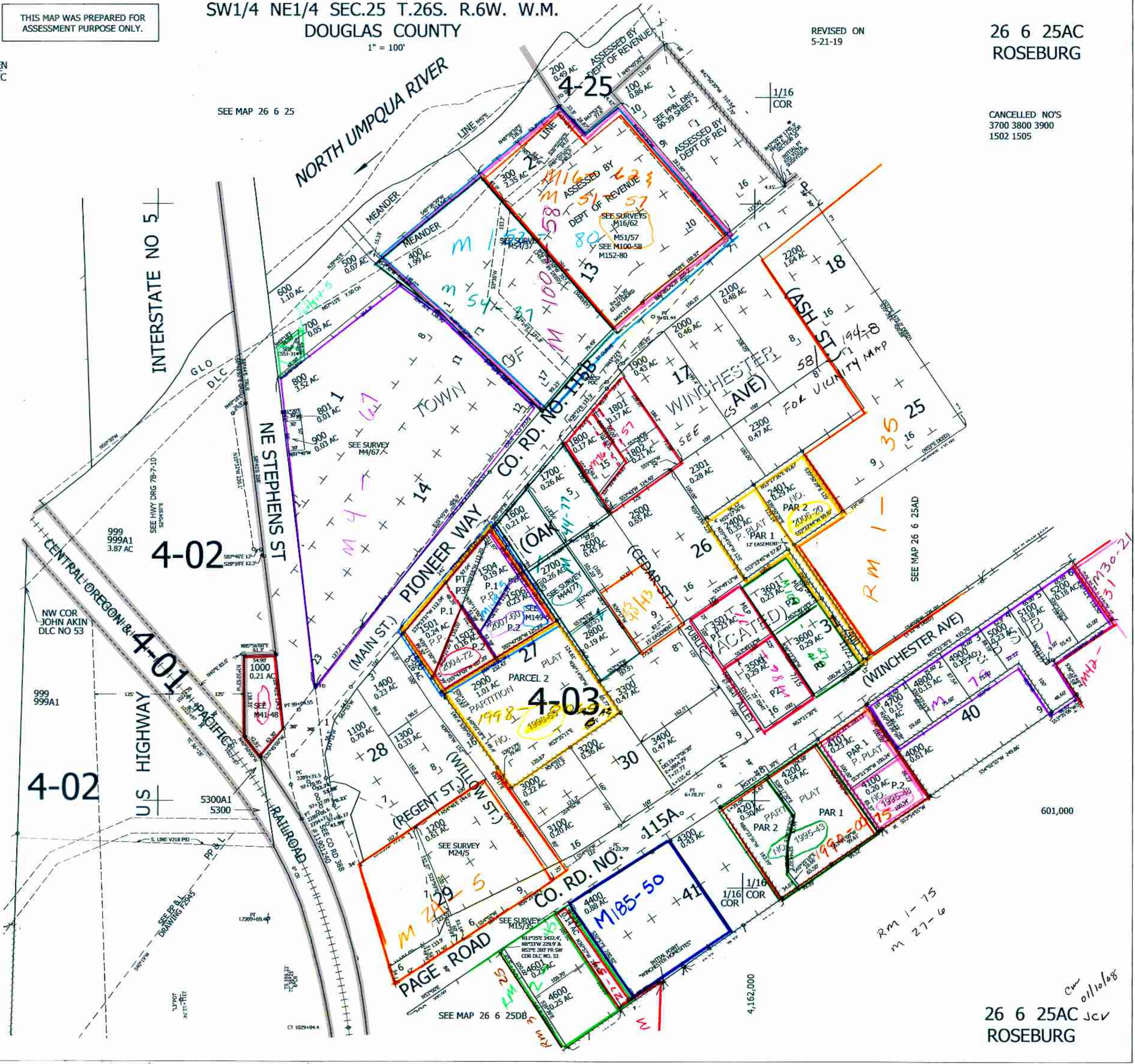
SEE MAP 26 6 25

CANCELLED NO'S  
3700 3800 3900  
1502 1505

CEN  
SEC

SEE MAP 26 6 25

CEN  
SEC



26 6 25AC JCV  
ROSEBURG

C. J. V.  
10/10/18