

THIS MAP WAS PREPARED FOR ASSESSMENT PURPOSE ONLY.

SE1/4 SEC.23 T.26S. R.6W. W.M.
DOUGLAS COUNTY
1" = 200'

REVISED ON
5-22-18

26 6 23D

SEE MAP 26 6 23A

PARCEL 3200

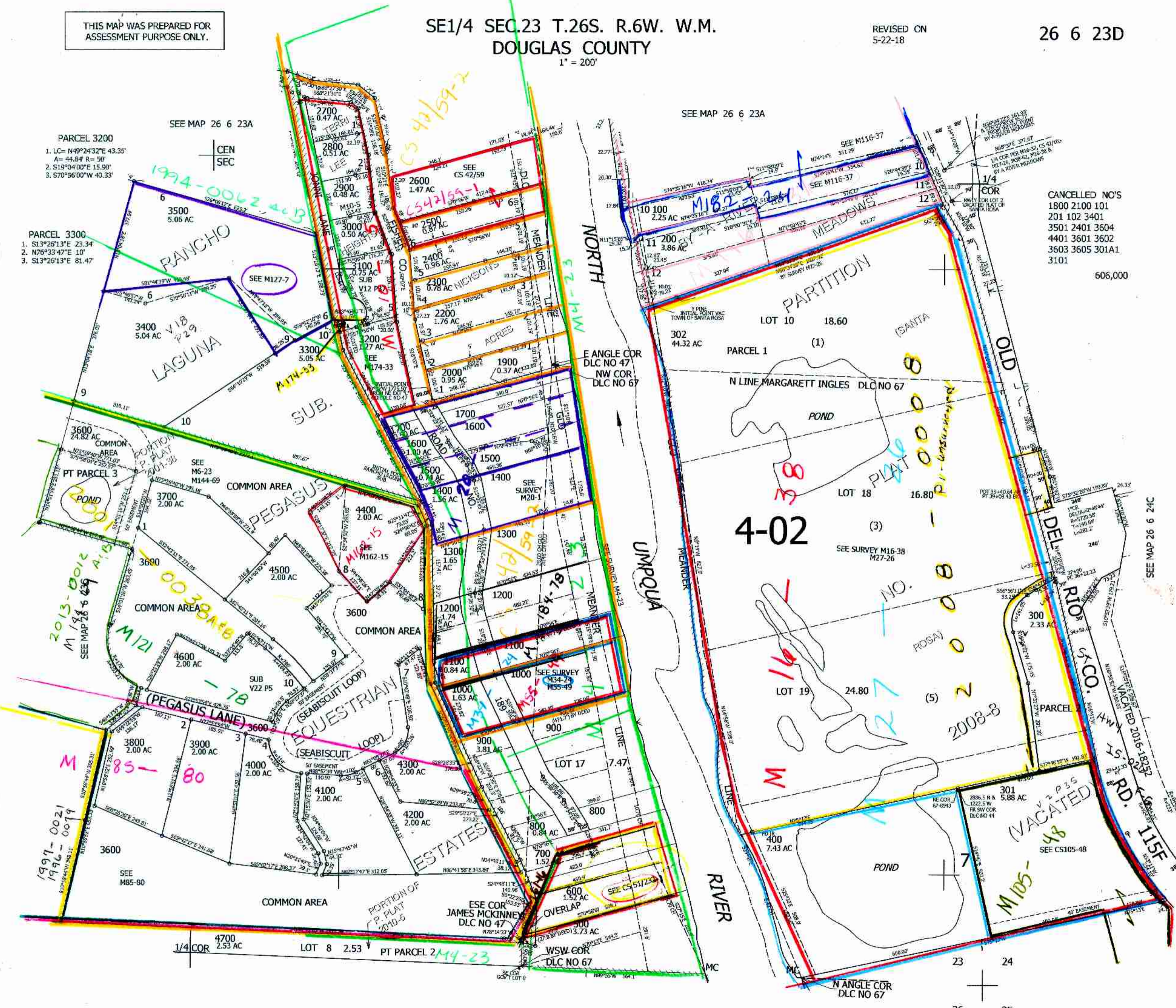
- 1. LC= N49°24'32"E 43.35'
- A= 44.84 R= 50'
- 2. S19°04'00"E 15.90'
- 3. S70°56'00"W 40.33'

PARCEL 3300

- 1. S13°26'13"E 23.34'
- 2. N76°33'47"E 10'
- 3. S13°26'13"E 81.47'

CANCELLED NO'S
1800 2100 101
201 102 3401
3501 2401 3604
4401 3601 3602
3603 3605 301A1
3101

606,000



SEE MAP 26 6 24C

SEE MAP 26 6 25

4,158,000

26 6 23D

4/19/06