

THIS MAP WAS PREPARED FOR ASSESSMENT PURPOSE ONLY.

SE1/4 SEC.22 T.26S. R.6W. W.M.
DOUGLAS COUNTY

REVISED ON 7-3-07 26 6 22D

1" = 200'

SEE MAP 26 6 22

CEN
SEC

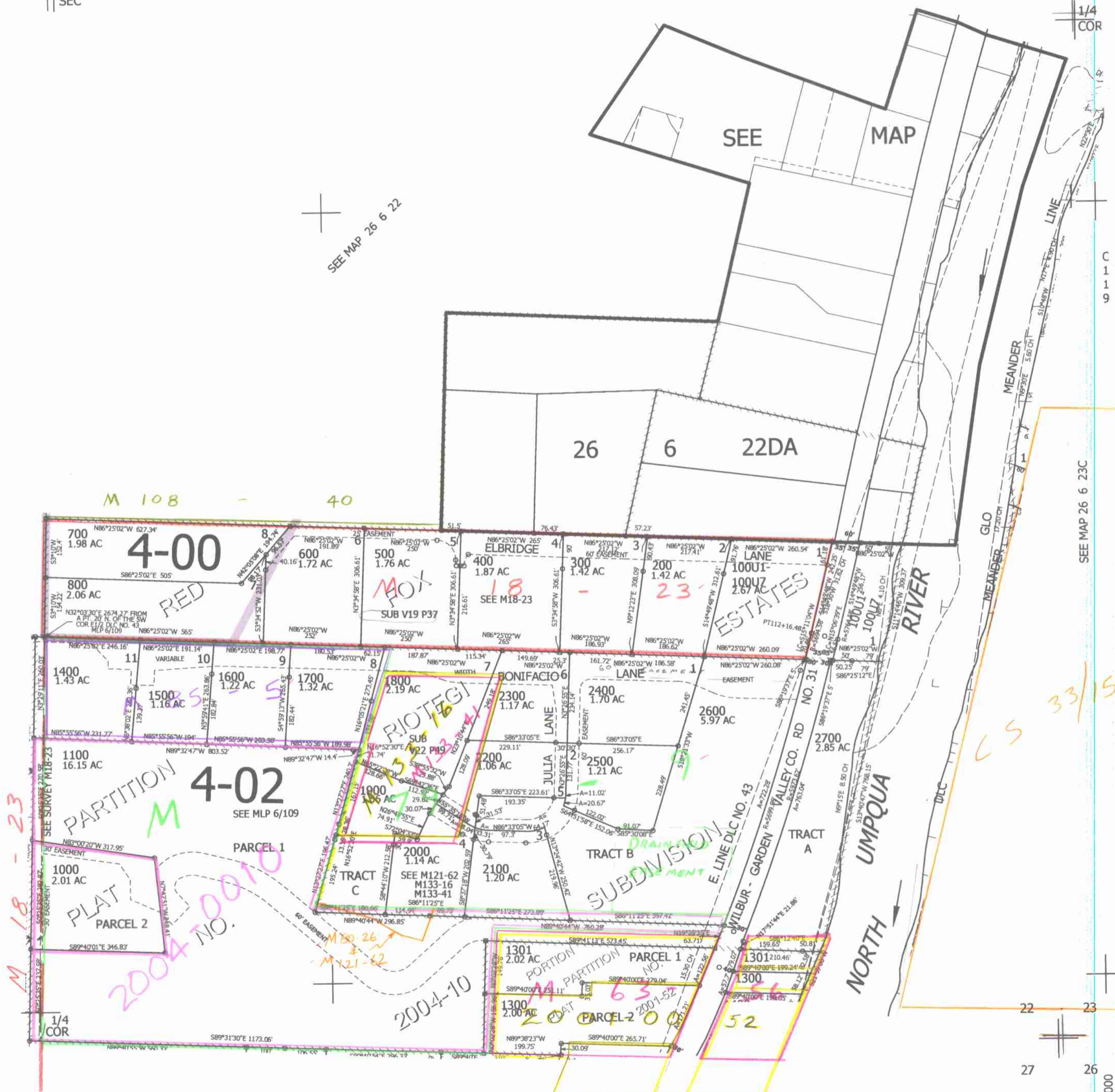
SEE MAP 26 6 22

1/4
COR

C
1
1
9

SEE MAP 26 6 23C

SEE MAP 26 6 22C



CS 33/15

M 18 - 23
M
2004-10
2004-11

SEE MAP 26 6 27A

26 6 22D

5/98 JP

4,153,000