

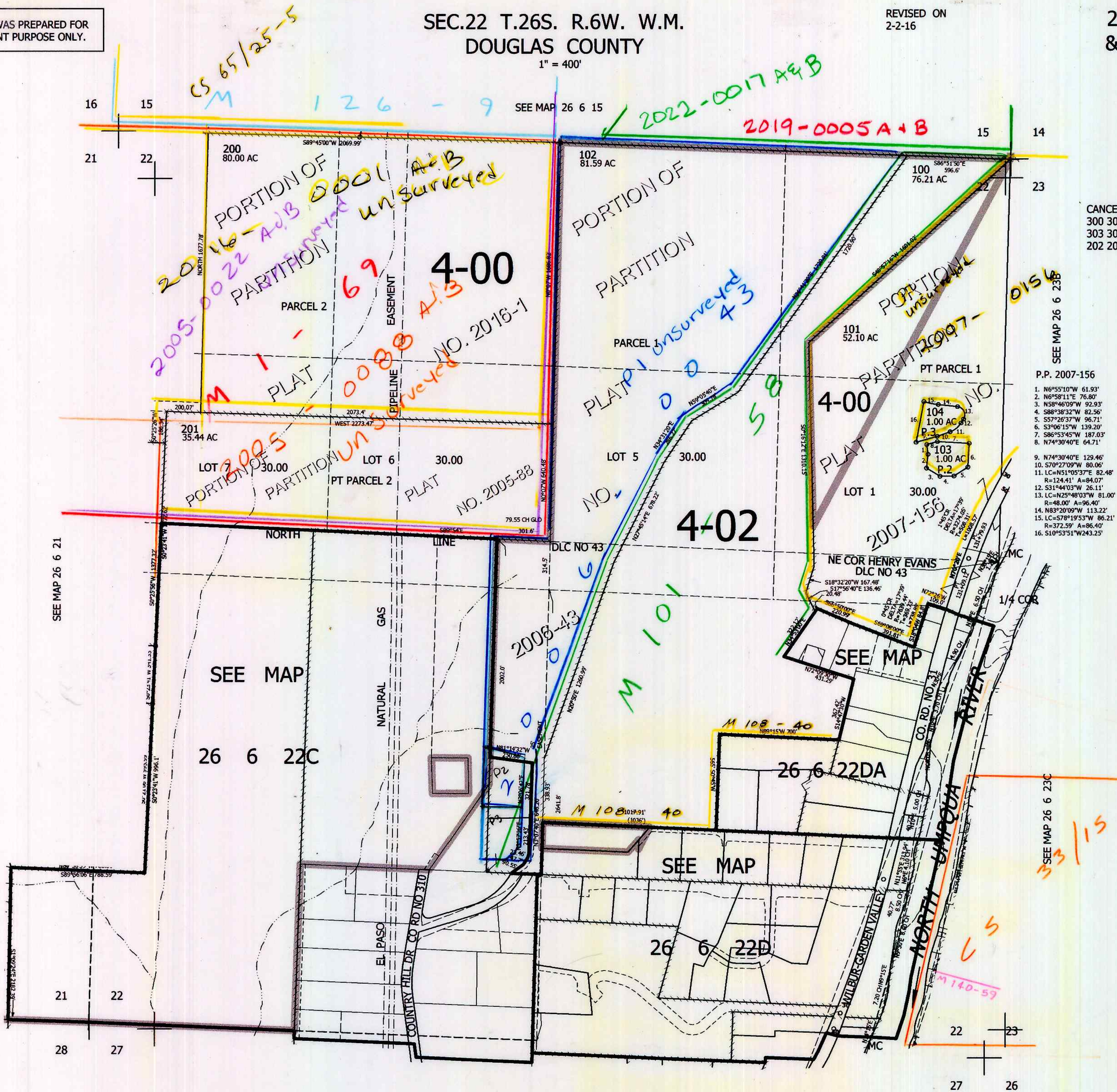
THIS MAP WAS PREPARED FOR ASSESSMENT PURPOSE ONLY.

SEC.22 T.26S. R.6W. W.M. DOUGLAS COUNTY

1" = 400'

REVISED ON 2-2-16

26 6 22 & INDEX



CANCELLED NO'S
300 301 302
303 304 305
202 203

- P.P. 2007-156
1. N6°55'10"W 61.93'
 2. N6°58'11"E 76.80'
 3. N58°46'09"W 92.93'
 4. S88°38'32"W 82.56'
 5. S3°26'37"W 96.71'
 6. S3°06'15"W 139.20'
 7. S86°53'45"W 187.03'
 8. N74°30'40"E 64.71'
 9. N74°30'40"E 129.46'
 10. S70°27'09"W 80.06'
 11. LC=N51°05'37"E 82.48'
R=124.41' A=84.07'
 12. S31°44'03"W 26.11'
 13. LC=N25°48'03"W 81.00'
R=48.00' A=96.40'
 14. N83°20'09"W 113.22'
 15. LC=S78°19'53"W 86.21'
R=372.59' A=86.40'
 16. S10°53'51"W 243.25'

SEE MAP 26 6 27B

SEE MAP 26 6 27A

26 6 22 & INDEX

4,153,000