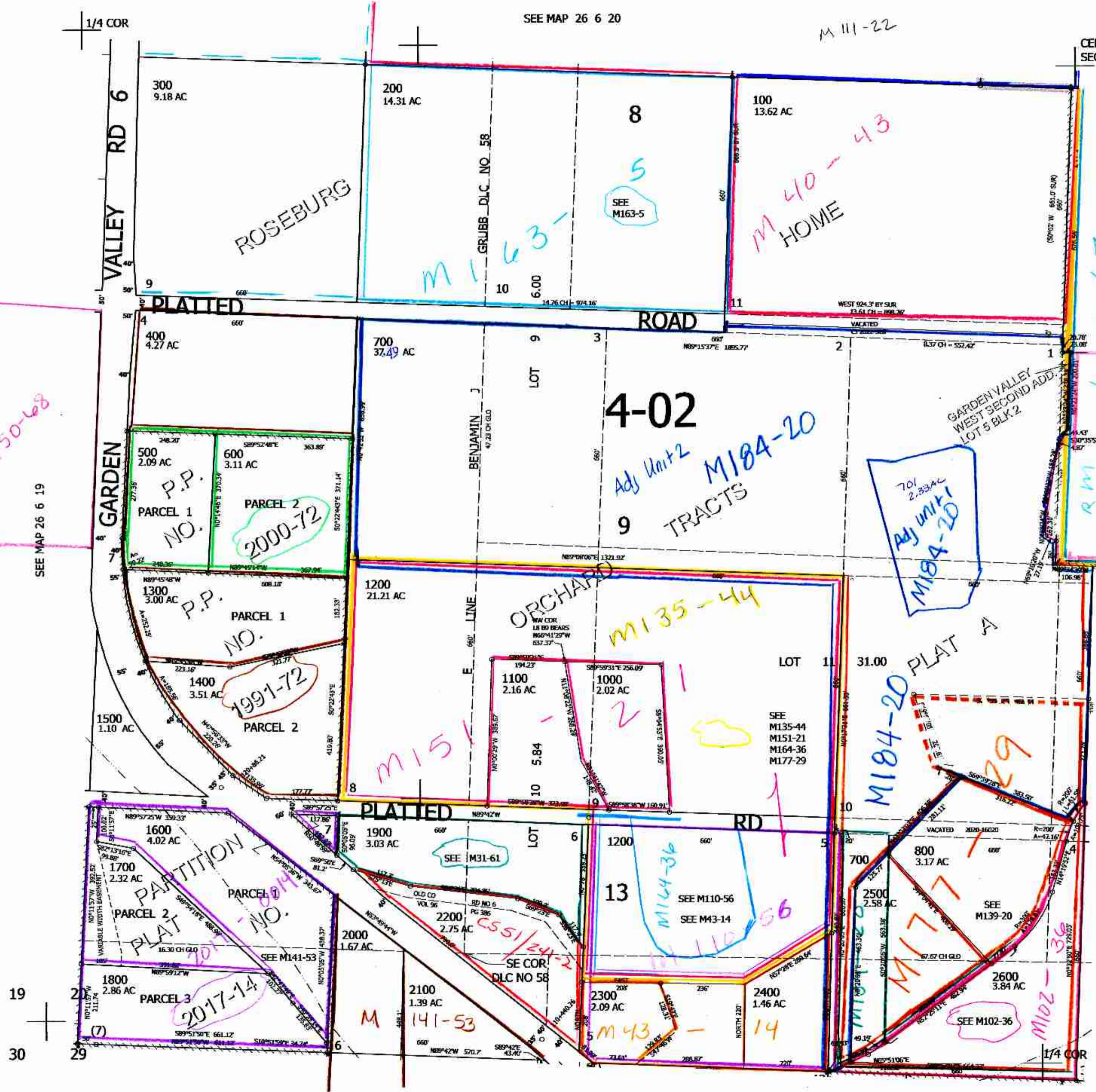


THIS MAP WAS PREPARED FOR ASSESSMENT PURPOSE ONLY.

SW1/4 SEC.20 T.26S. R.6W. W.M.
DOUGLAS COUNTY
1" = 200'

REVISED ON
4-26-22

26 6 20C



CANCELLED NO'S
801 2501 803
900 802

SEE MAP 26 6 20D

605,000

SEE MAP 26 6 29B

SEE MAP 26 6 29A

4,140,000

8/28/17

scr

26 6 20C