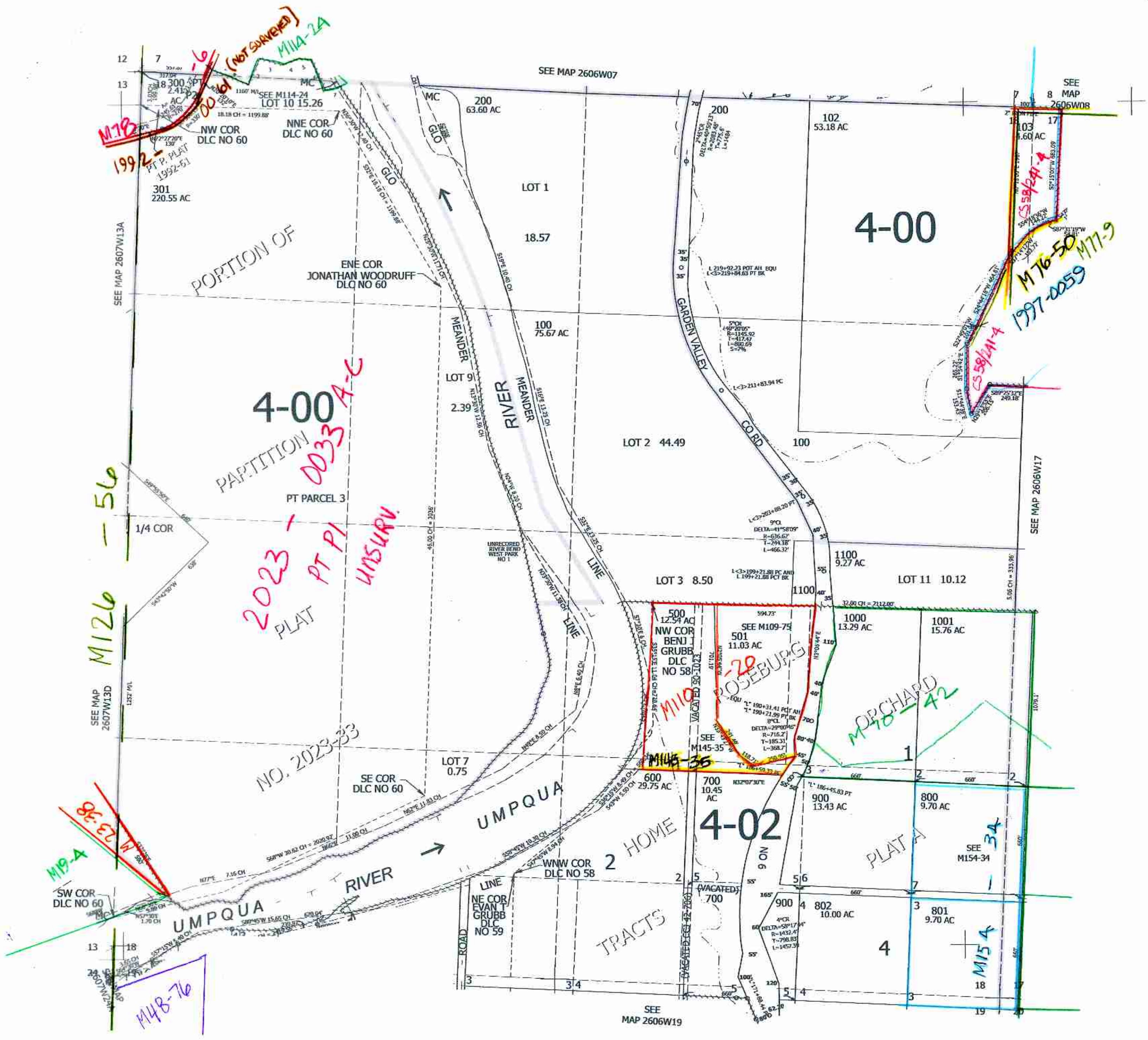


SEC.18 T.26S. R.06W. W.M.
DOUGLAS COUNTY
1" = 400'

Upper Left:
123°28'17"W 43°19'5"N
4130710E 615891N ft

- PARCEL 301
1. N69°00'49"W 258.87'
 2. S20°42'55"W 173.34'
 3. N76°15'05"W 132.36'
 4. S68°23'20"W 100.87'
 5. S86°44'12"W 88.98'
 6. N23°58'48"W 198.67'
 7. S74°21'59"W 156.1'



260618
2/28/25
JCV

Lower Right:
123°26'28"W 43°17'59"N
4138560E 608936N ft