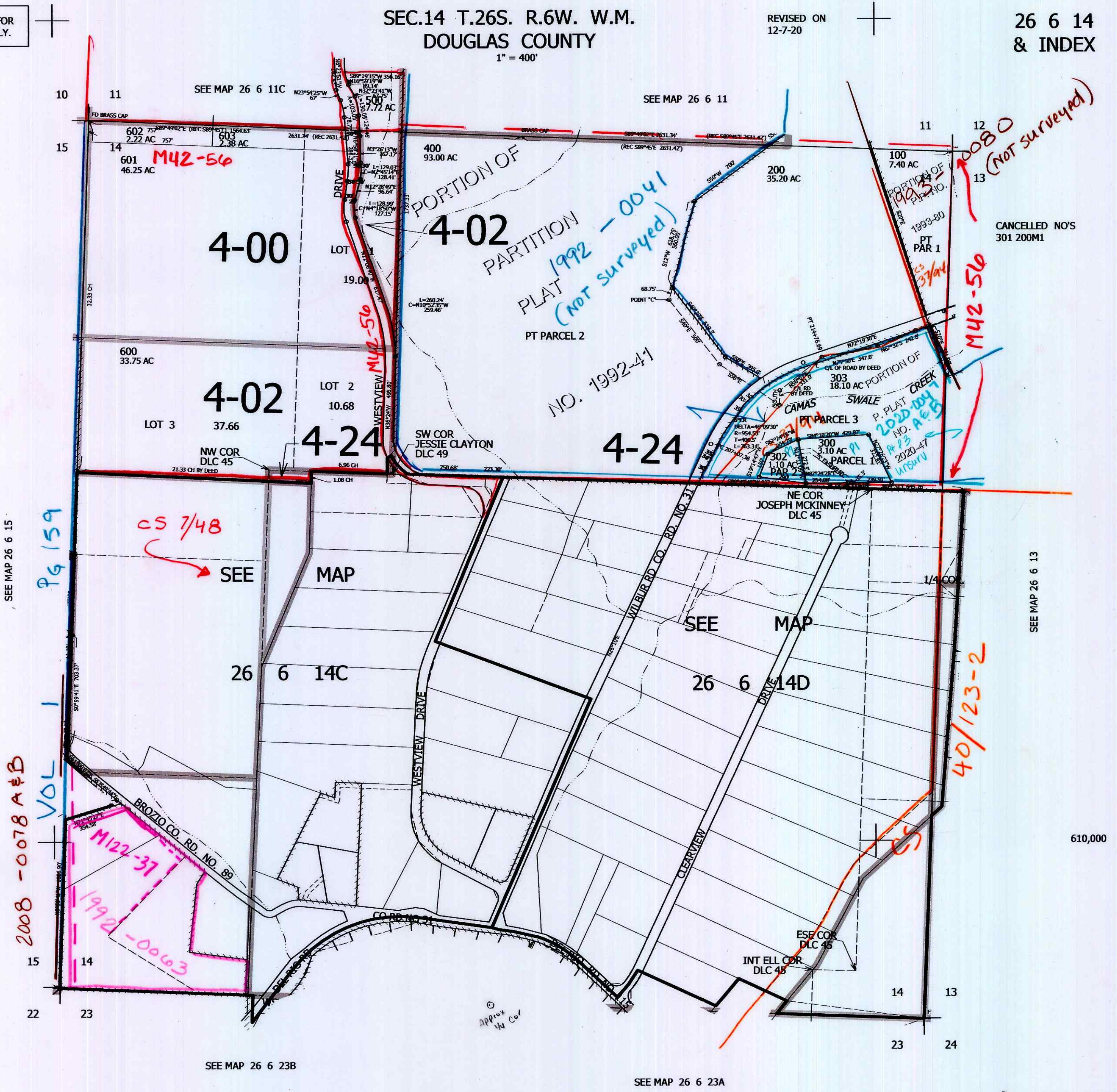


THIS MAP WAS PREPARED FOR ASSESSMENT PURPOSE ONLY.

SEC.14 T.26S. R.6W. W.M.
DOUGLAS COUNTY
1" = 400'

REVISED ON
12-7-20

26 6 14
& INDEX



SEE MAP 26 6 15

Pg 159

2008-0078 A & B

VOL 1

M122-37
1992-0063

CS 7/48

SEE MAP

MAP

SEE MAP

MAP

SEE MAP 26 6 13

40/123-2

SEE MAP 26 6 23B

SEE MAP 26 6 23A

4,158,000

449
26 6 14
& INDEX