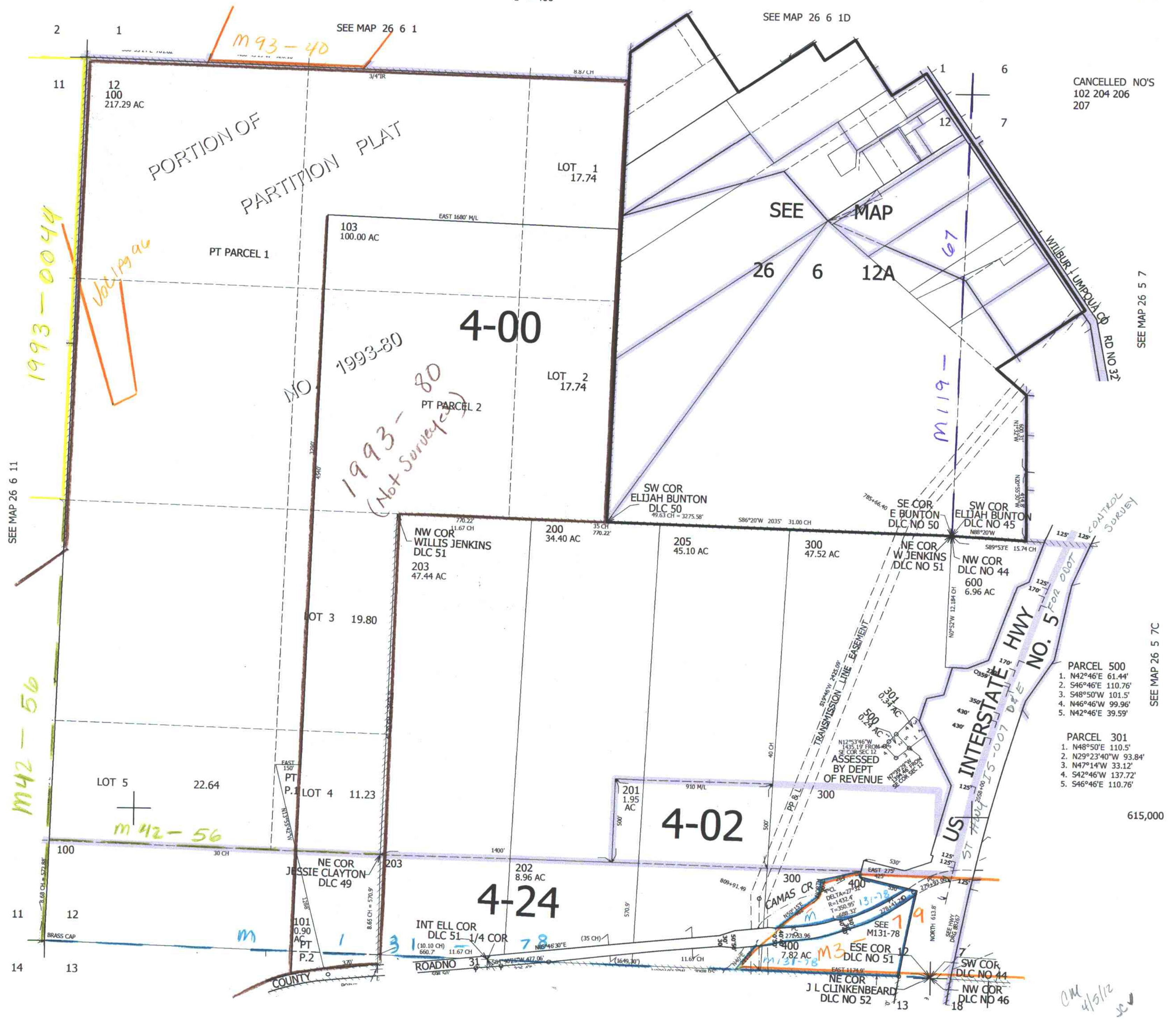


THIS MAP WAS PREPARED FOR ASSESSMENT PURPOSE ONLY.

SEC.12 T.26S. R.6W. W.M. DOUGLAS COUNTY 1" = 400'

REVISED ON 3-22-13



CANCELLED NO'S 102 204 206 207

SEE MAP 26 5 7

SEE MAP 26 5 7C

- PARCEL 500
1. N42°46'E 61.44'
  2. S48°46'E 110.76'
  3. S48°50'W 101.5'
  4. N46°46'W 99.96'
  5. N42°46'E 39.59'

- PARCEL 301
1. N48°50'E 110.5'
  2. N29°23'40"W 93.84'
  3. N47°14'W 33.12'
  4. S42°46'W 137.72'
  5. S46°46'E 110.76'

615,000

SEE MAP 26 6 13

4,164,000