

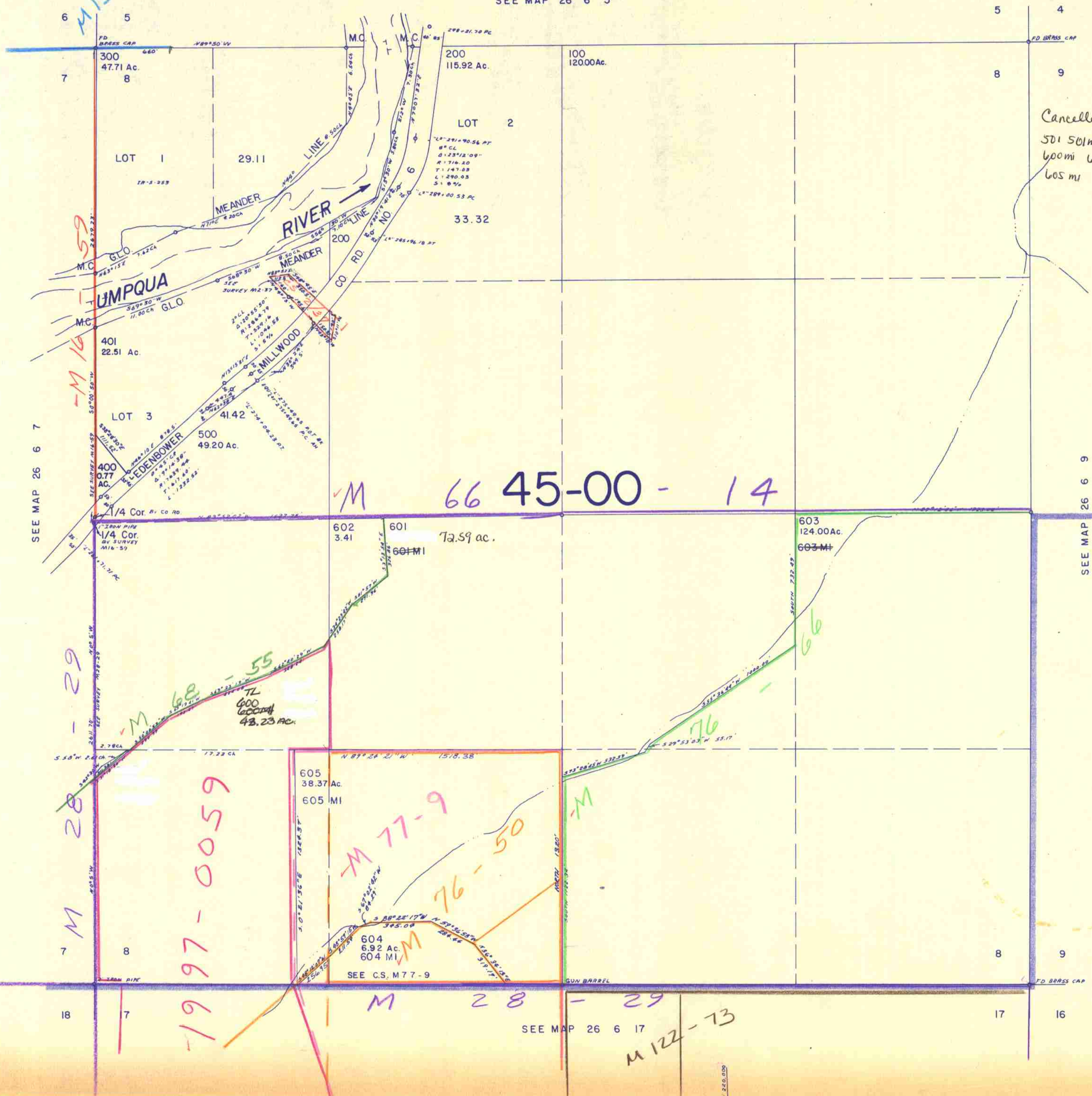
SECTION 8 T.26S. R.6W. W.M.
DOUGLAS COUNTY

REVISED ON
3-24-92

26 6 8

1" = 400'

SEE MAP 26 6 5



Cancelled #'s
501 501m 601m
600m 603m 604m
605m

M 66 45-00-14

M 1997-0059

M 77-9
M 76-50

M 28-29

M 122-73

26 6 8

4/92