

SECTION 7 T.26S. R.6W. W.M.
DOUGLAS COUNTY

REVISED ON
3-24-92

26 6 7

1" = 400'

SEE MAP 26 6 6

1997 - 0056

M 154 - 32

(Unsurveyed)

Cancelled #'s
301
302

M 79 - 76

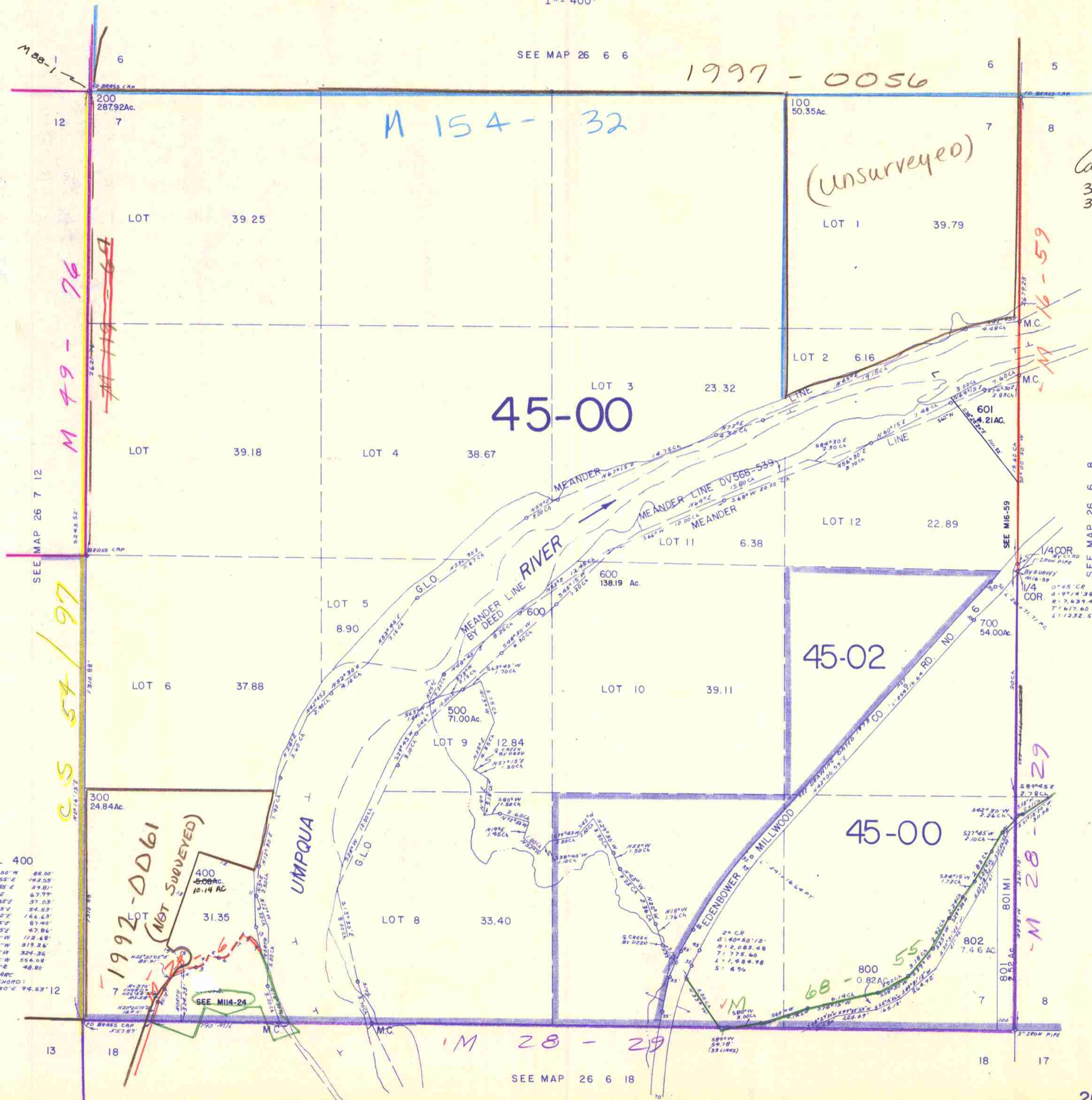
M 16 - 59

C.S. 54 / 97

PARCEL 400

- 1. S26°23'50"W 85.00'
- 2. N46°48'55"E 149.55'
- 3. N77°19'55"E 29.01'
- 4. N27°44'E 67.79'
- 5. S78°58'45"E 57.03'
- 6. N82°59'15"E 54.53'
- 7. N22°01'40"E 166.43'
- 8. S58°18'35"E 87.90'
- 9. S24°38'55"E 47.86'
- 10. N10°36'05"W 112.68'
- 11. N3°02'40"W 319.26'
- 12. N71°18'25"W 324.36'
- 13. S18°46'35"W 556.08'
- 14. S58°36'10"E 48.80'
- 15. 203' 4.5" ARC
- R: 50.0' CHORD:
- S25°28'30"E 94.53' 12

1992-0061
(NOT SURVEYED)



SEE MAP 26 6 18

26 6 7