

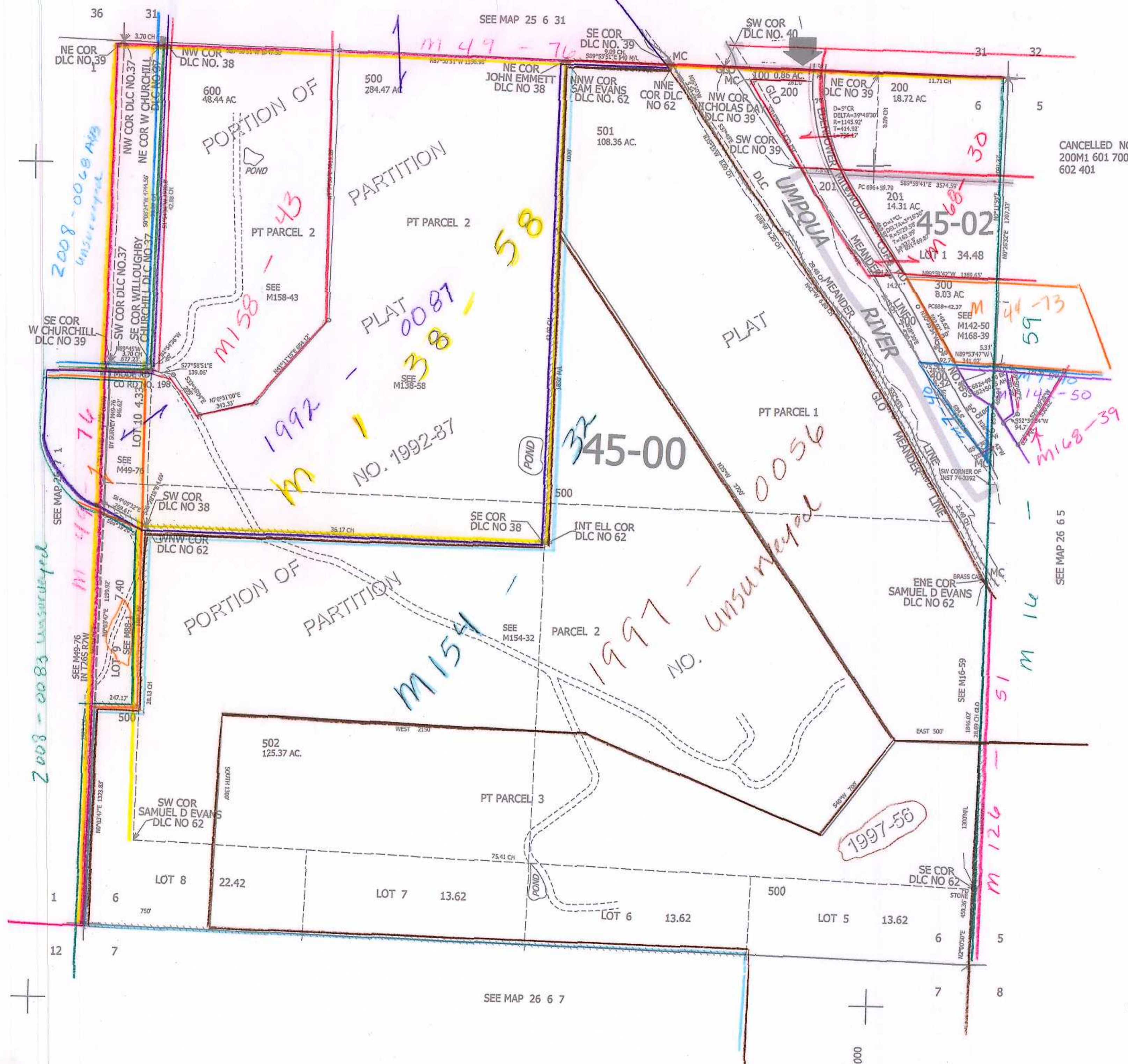
THIS MAP WAS PREPARED FOR ASSESSMENT PURPOSE ONLY.

SEC.6 T.26S. R.6W. W.M. DOUGLAS COUNTY

1" = 400'

REVISED ON 12-2-14

26 6 6



2008-0068 A/B
unsurveyed

2008-0083 unsurveyed

M 49-76

M 158-43

PLAT NO. 1992-87

M 154-32

45-00

1997-56
NO. UNSURVEYED

M 126-51
M 126-56

CANCELLED NO'S
200M1 601 700
602 401

SEE MAP 26 6 7

SEE MAP 26 6 5

4,137,000

620,000

26 6 6