

THIS MAP WAS PREPARED FOR ASSESSMENT PURPOSE ONLY.

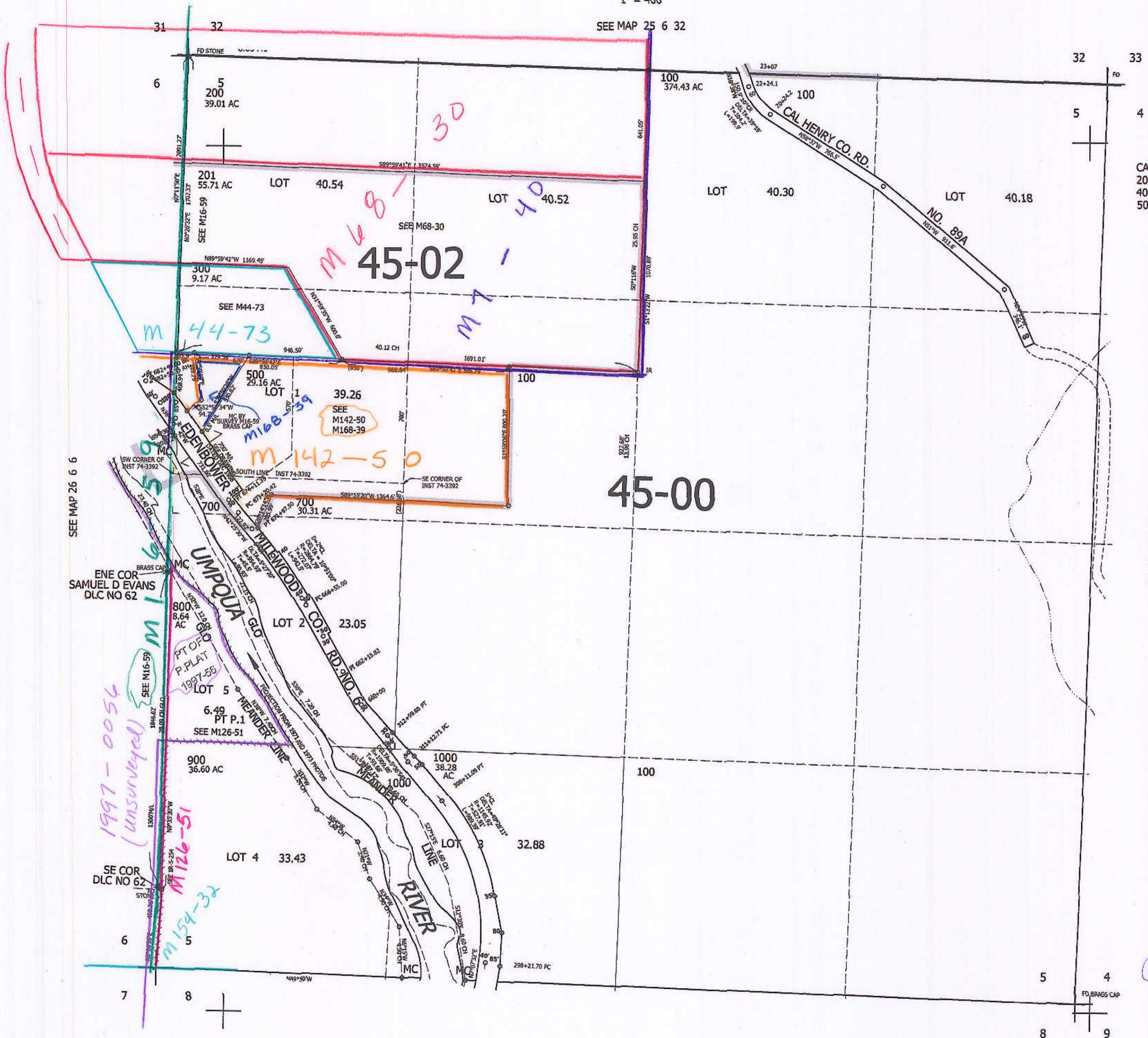
SEC.5 T.26S. R.6W. W.M. DOUGLAS COUNTY

26 6 5

REVISED ON 12-2-14

1" = 400'

SEE MAP 25 6 32



CANCELLED NO'S
200M1 101 701
400 600 501
502

SEE MAP 26 6 6

SEE MAP 26 6 4

1997-0056 (unsurveyed)
M126-51
M154-32

all 3/22/14

SEE MAP 26 6 8

26 6 5

4,143,000

620,000

scr