

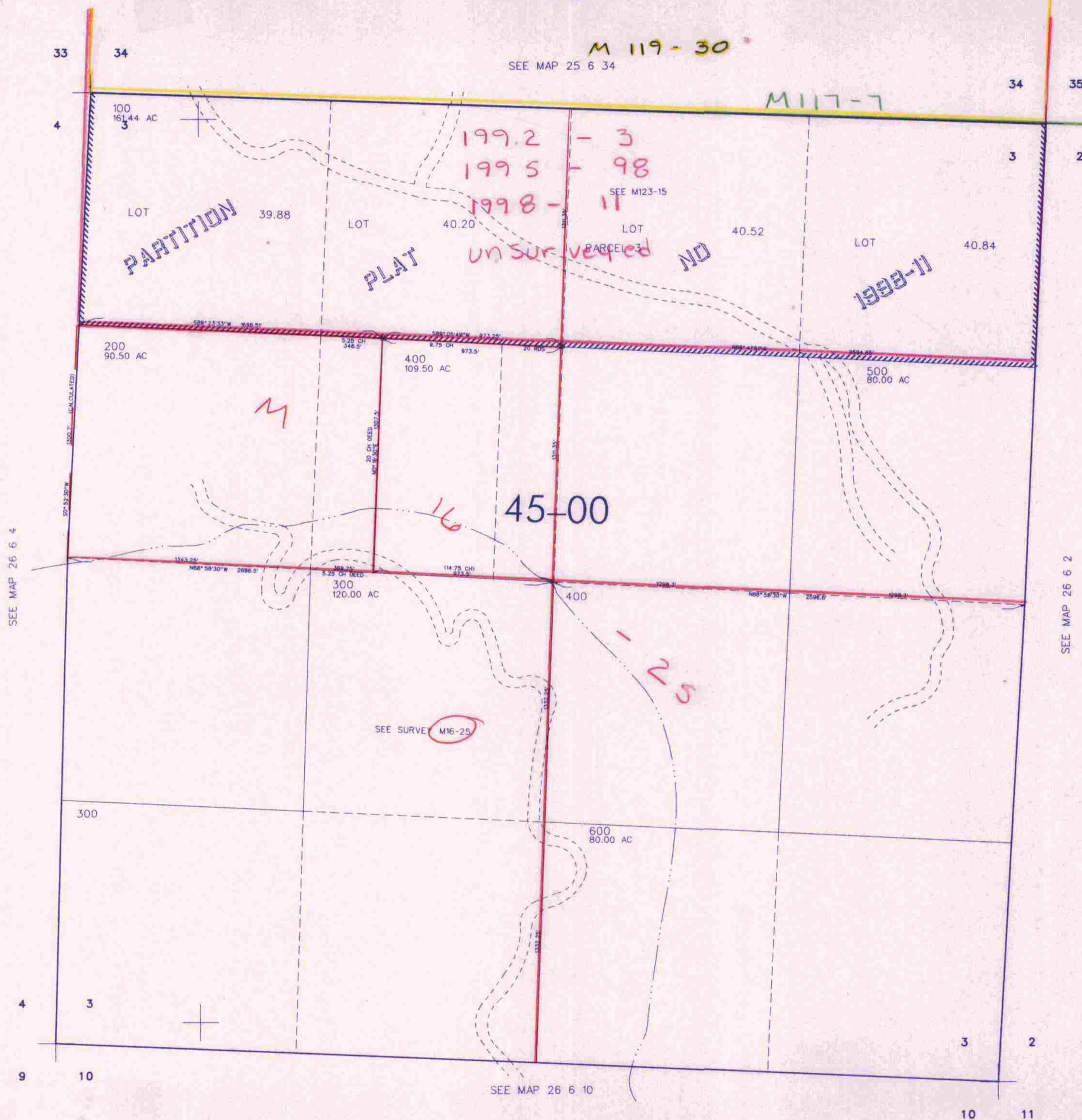
THIS MAP WAS PREPARED FOR ASSESSMENT PURPOSE ONLY

SEC. 3 T.26S. R. 6W W.M.
DOUGLAS COUNTY

REVISED ON
2-17-98

26 6 3

1"=400'



SEE MAP 26 6 4

SEE MAP 26 6 2

SEE MAP 26 6 10

4,154,000
10/98
26 6 3
10/98