

THIS MAP WAS PREPARED FOR ASSESSMENT PURPOSE ONLY.

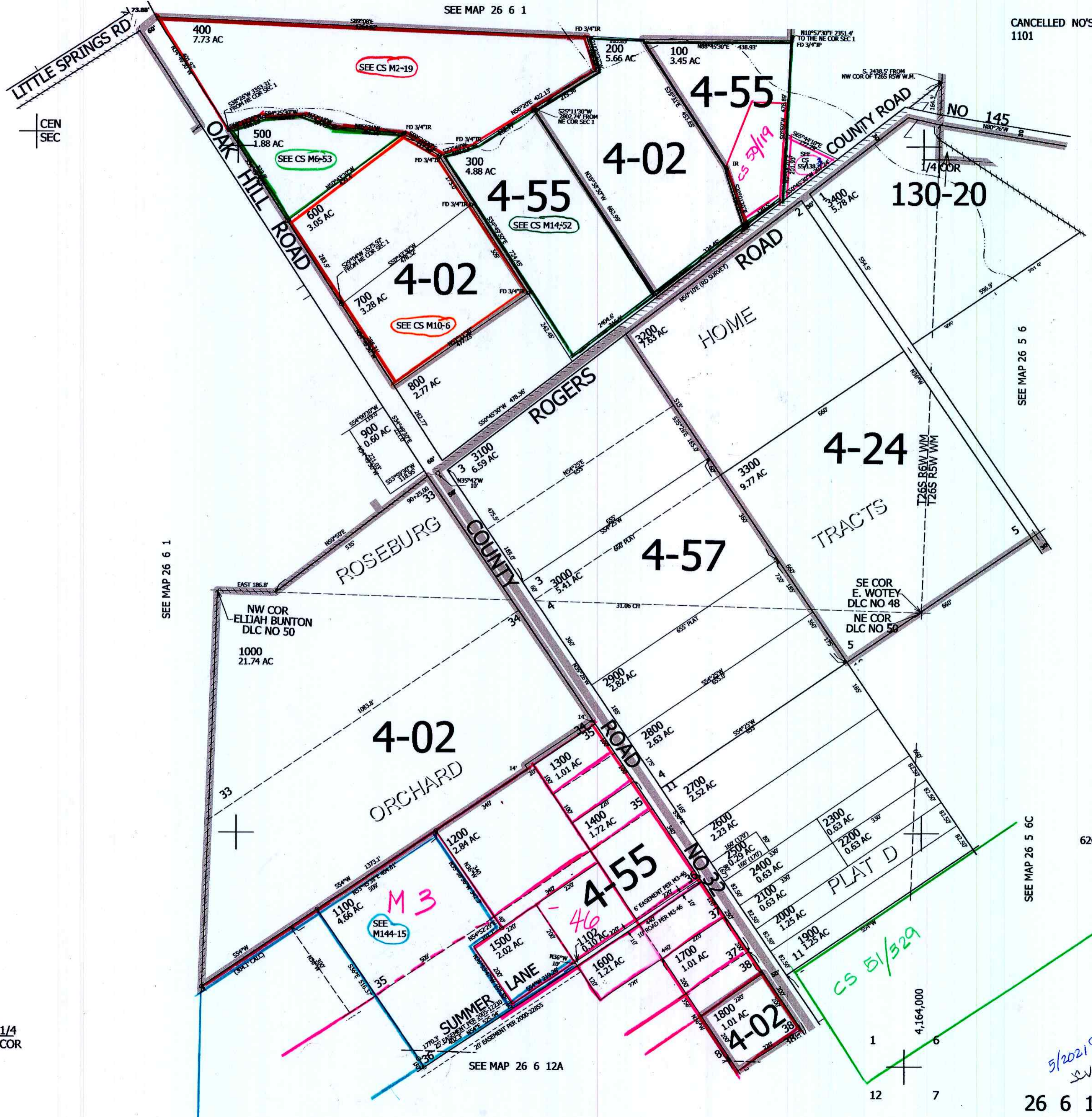
SE1/4 SEC.1 T.26S. R.6W. W.M.  
DOUGLAS COUNTY

REVISED ON  
5-11-21

26 6 1D

1" = 200'

CANCELLED NO'S  
1101



SEE MAP 26 6 1

SEE MAP 26 5 6

SEE MAP 26 5 6C

620,000

5/2021  
SW  
26 6 1D