

THIS MAP WAS PREPARED FOR ASSESSMENT PURPOSE ONLY.

SW1/4 SEC.32 T.26S. R.5W. W.M. DOUGLAS COUNTY

26 5 32C

1"=200'

1/4 COR.

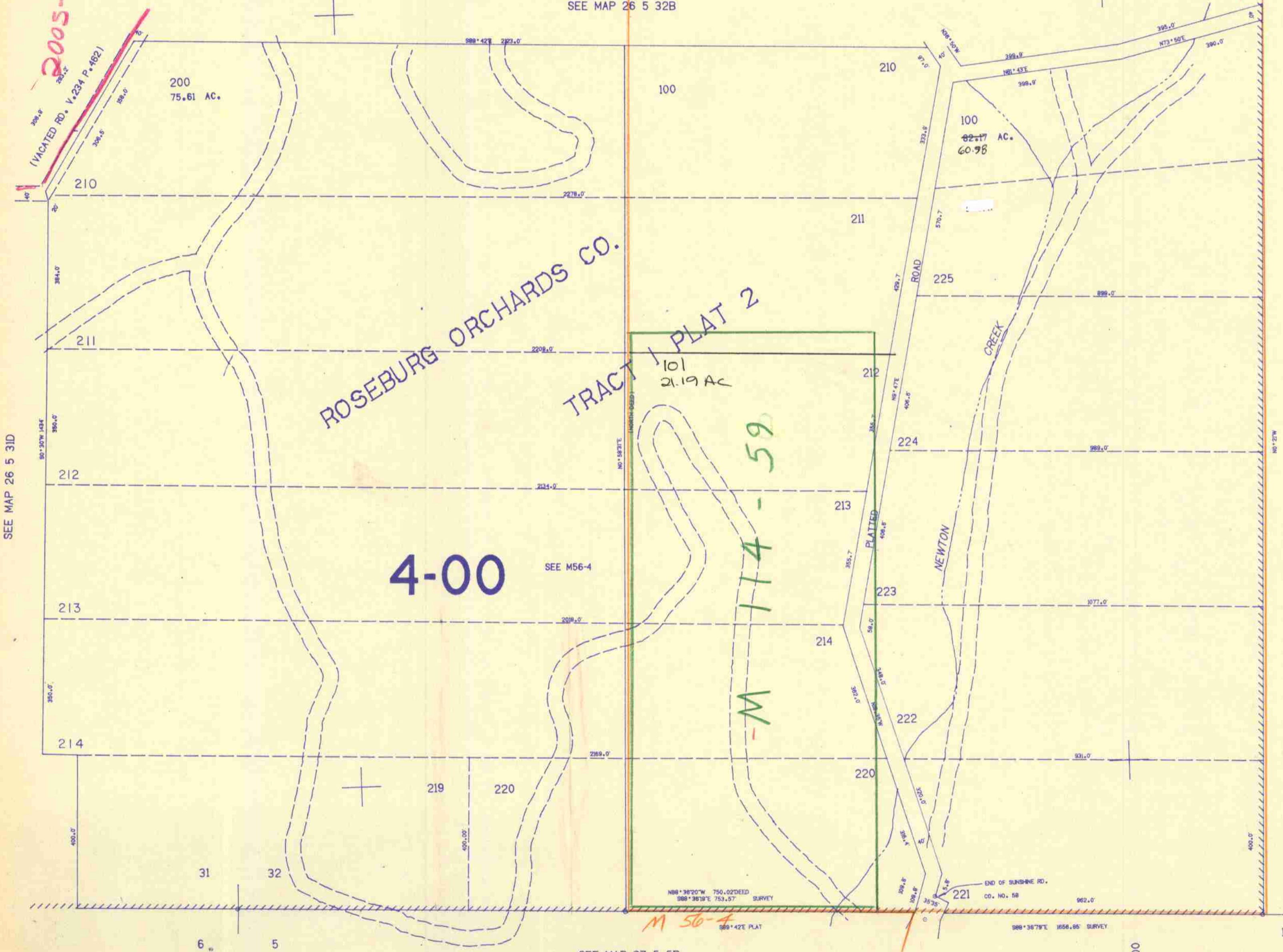
CENTER SEC.

Cancelled # 100 A

2005-0001 Ad B

M 56-4

SEE MAP 26 5 32B



SEE MAP 26 5 31D

SEE MAP 26 5 32

593.000

1/4 COR.

SEE MAP 27 5 5B

1:250,000

26 5 32C

10/81 BJ

CHECKED CONTROL