

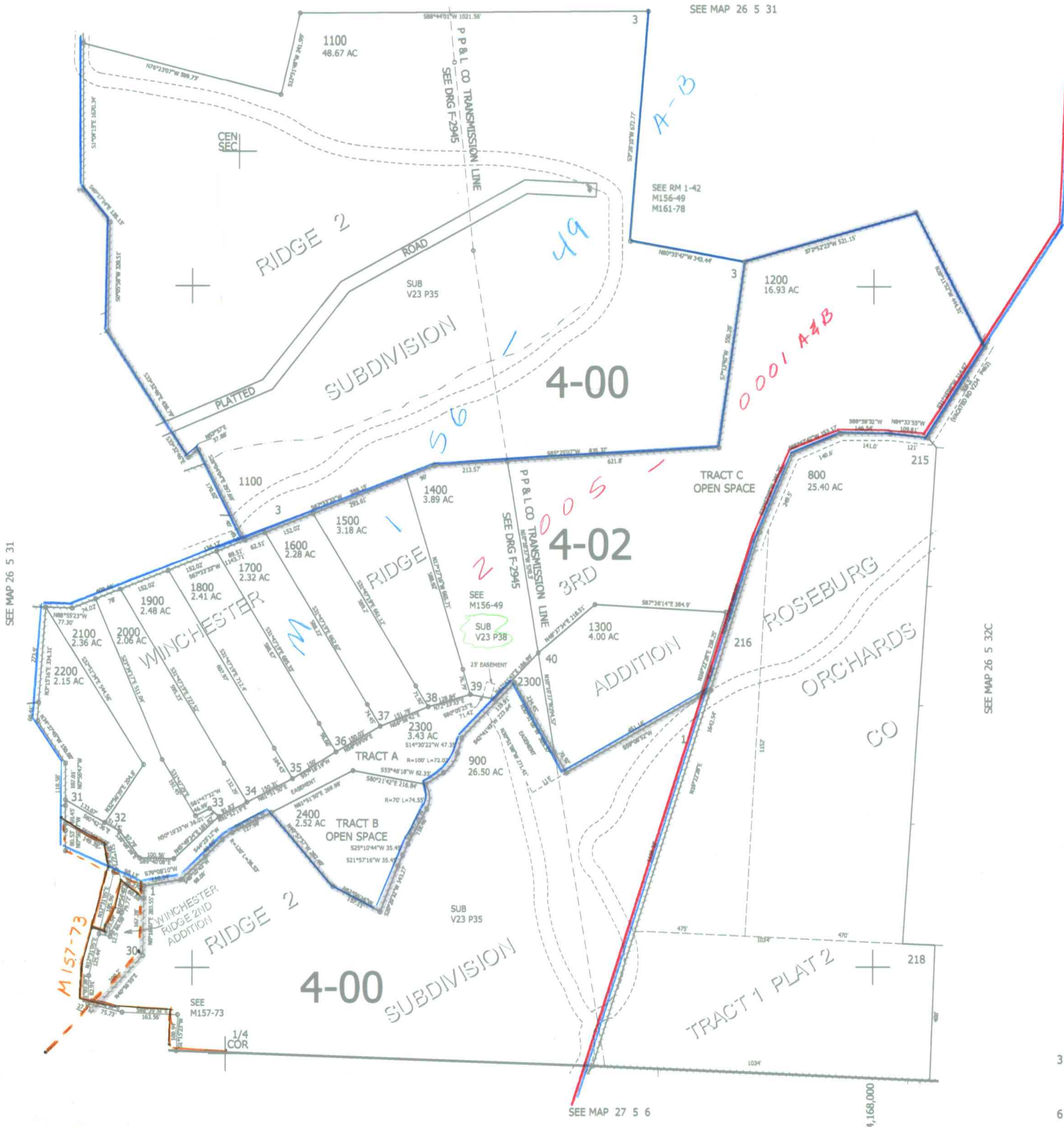
THIS MAP WAS PREPARED FOR ASSESSMENT PURPOSE ONLY.

SE1/4 SEC.31 T.26S. R.5W. W.M.  
DOUGLAS COUNTY  
1" = 200'

REVISED ON  
3-18-14

26 5 31D

CANCELLED NO'S  
200 THRU 701  
801 100 1000  
901 2301



1/4  
COR

SEE MAP 26 5 32C

SEE MAP 26 5 31

593,000

31 32  
6 5

CM  
2/14/12  
26 5 31D

SEE MAP 27 5 6

4,168,000