

SW1/4 SW1/4 SEC.30 T.26S. R.5W. W.M.
DOUGLAS COUNTY

REVISED ON
3-1-10

26 5 30CC

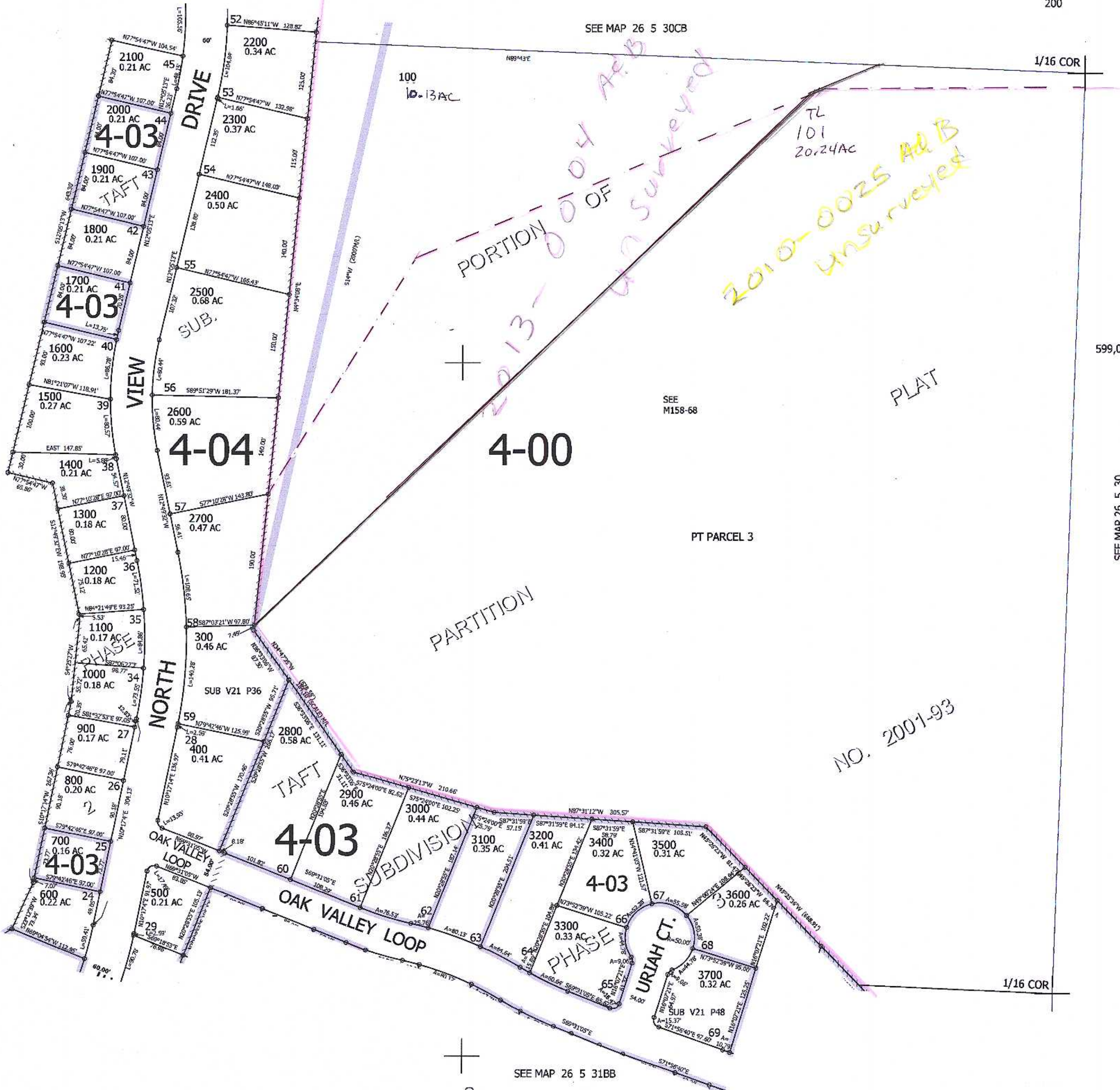
1" = 100'

CANCELLED NO'S
200

THIS MAP WAS PREPARED FOR
ASSESSMENT PURPOSE ONLY.

1/16
COR

SEE MAP 26 6 25



599,000

SEE MAP 26 5 30

25 30
36 31

4,164,000

SEE MAP 26 5 31BB

26 5 30CC