

THIS MAP WAS PREPARED FOR ASSESSMENT PURPOSE ONLY.

NE1/4 SW1/4 SEC.30 T.26S. R.5W. W.M.
DOUGLAS COUNTY
1" = 100'

REVISED ON
11-29-21

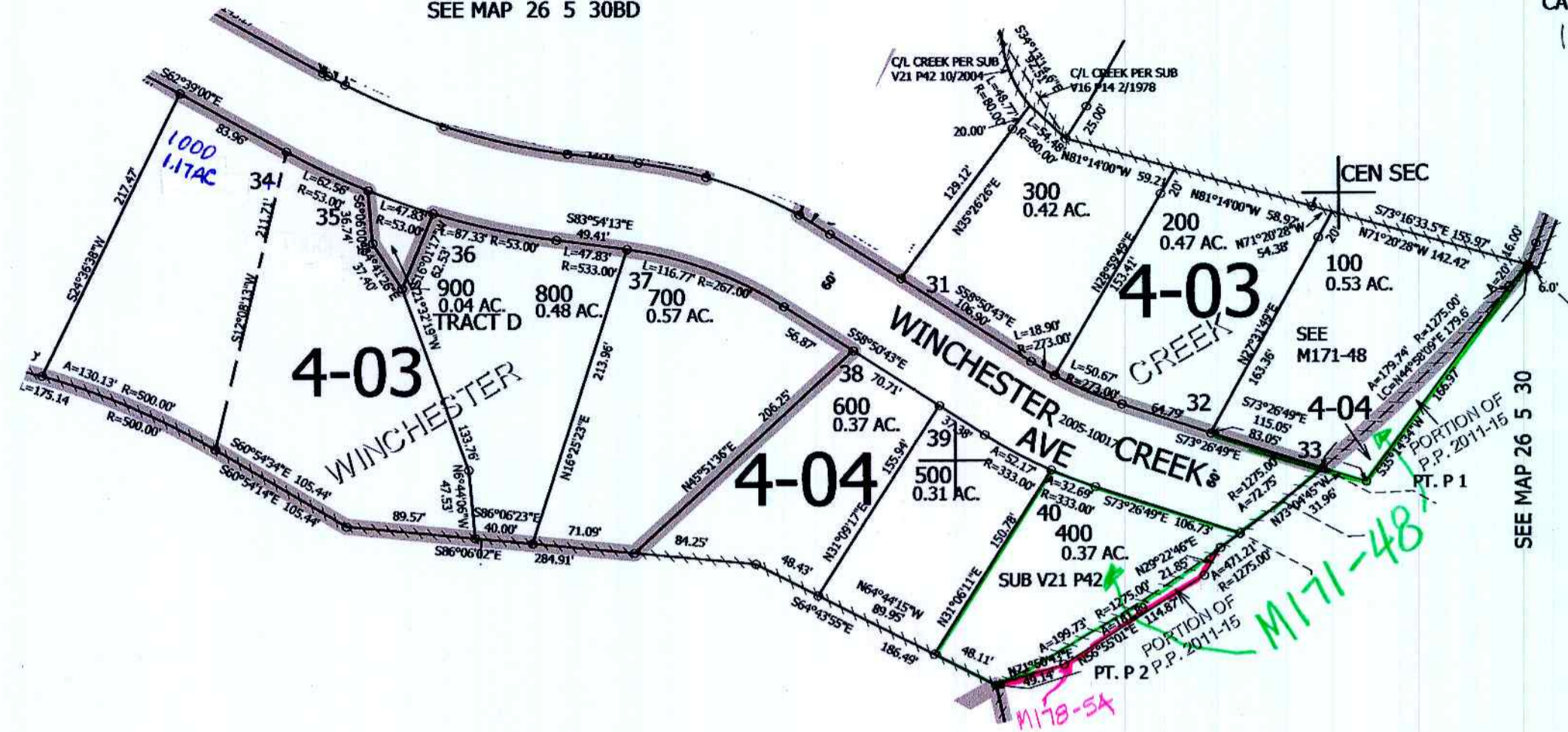
26 5 30CA

CANCELLED NO'S
1100

1/16 COR

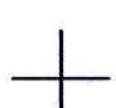
SEE MAP 26 5 30BD

SEE MAP 26 5 30CB

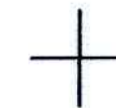


SEE MAP 26 5 30

SEE MAP 26 5 30



1/16 COR



4,166,000

1/16 COR

599,500

12-2021 DA
SCW

26 5 30CA