

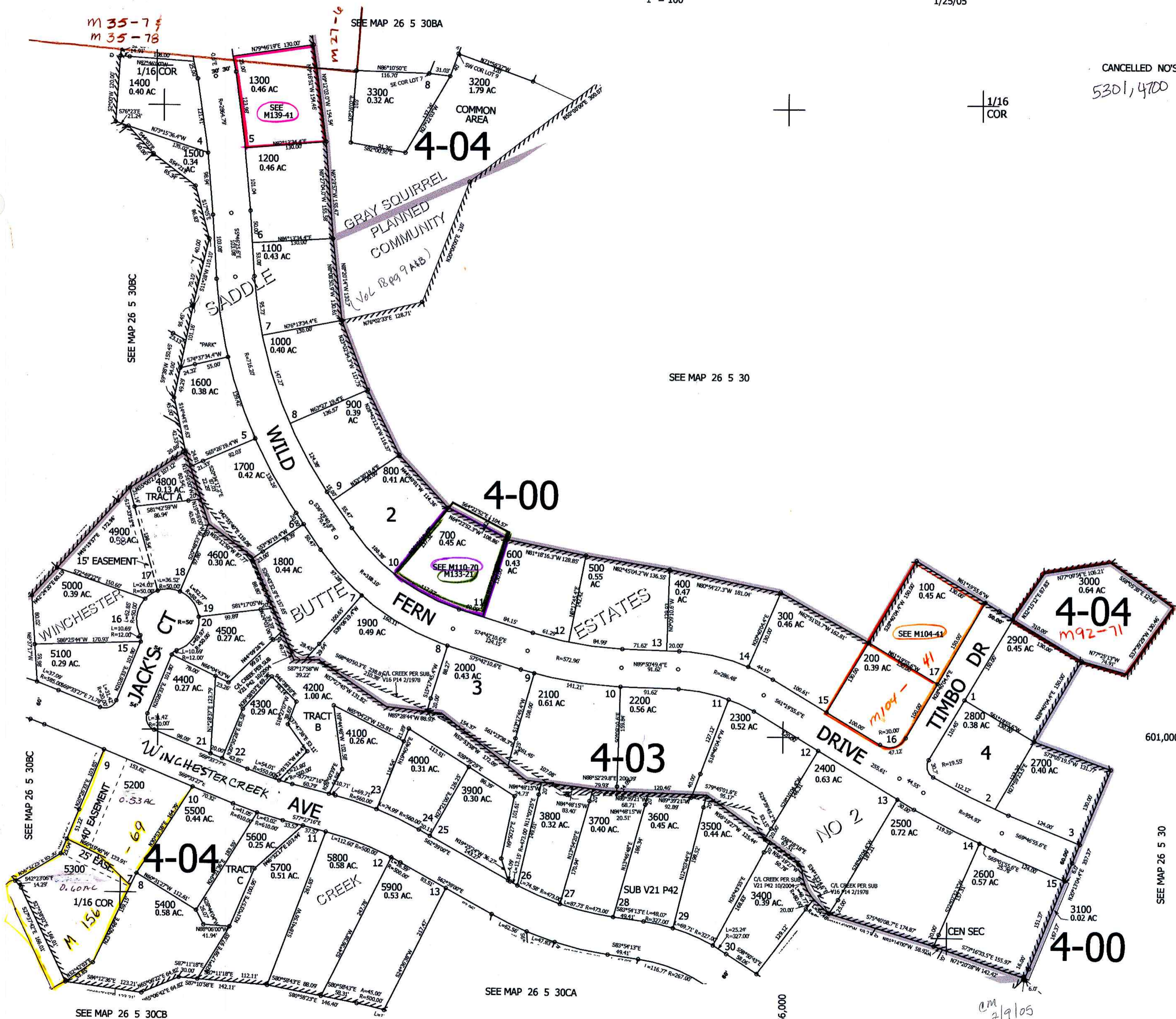
THIS MAP WAS PREPARED FOR ASSESSMENT PURPOSE ONLY.

SE1/4 NW1/4 NE1/4 SEC.30 T.26S. R.5W. W.M.
DOUGLAS COUNTY
1" = 100'

26 5 30BD

REVISED ON
1/25/05

CANCELLED NO'S
5301, 4700



am 2/9/05
vnr

26 5 30BD