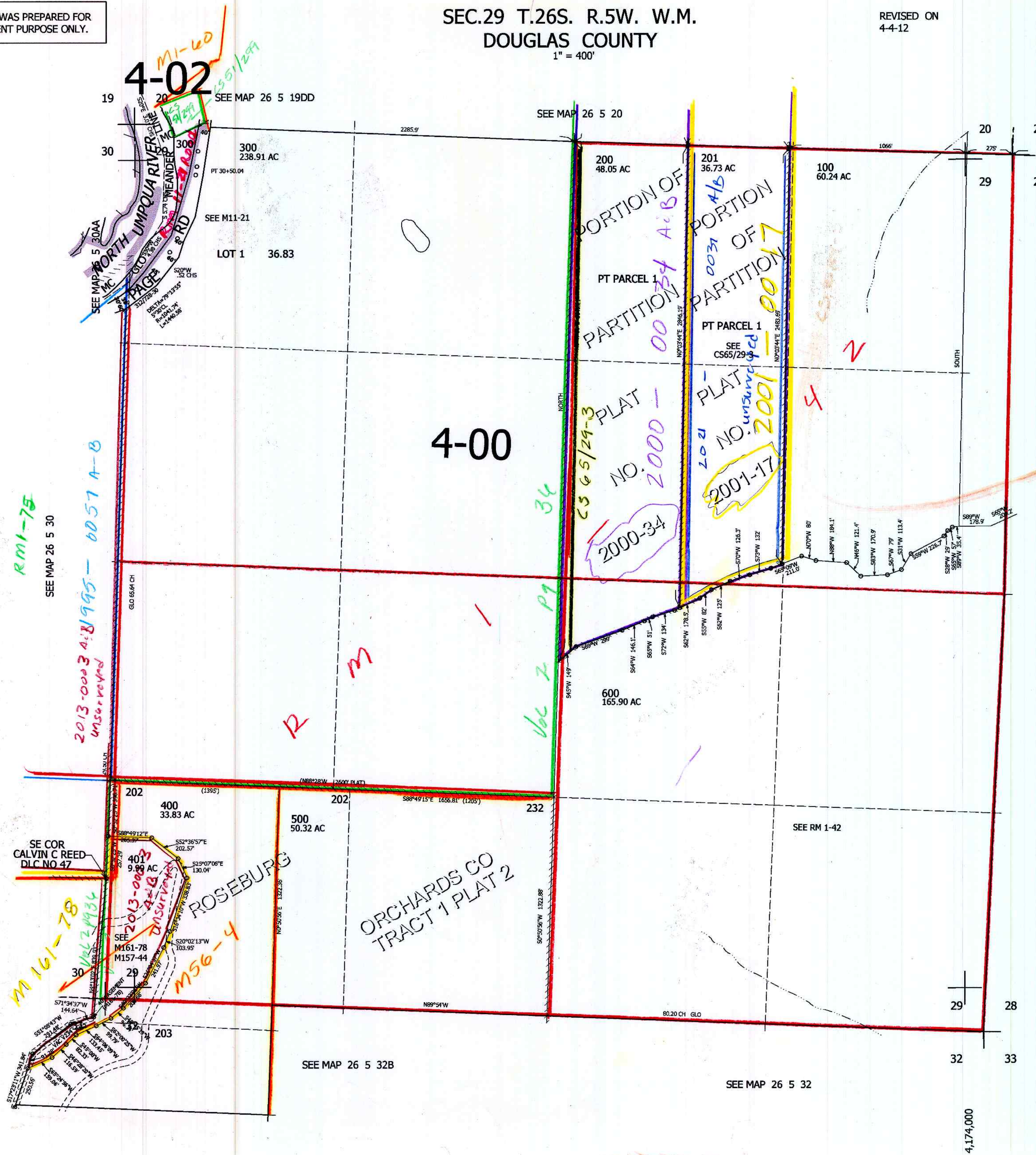


THIS MAP WAS PREPARED FOR ASSESSMENT PURPOSE ONLY.

SEC.29 T.26S. R.5W. W.M. DOUGLAS COUNTY
1" = 400'

REVISED ON 4-4-12

26 5 29



CANCELLED NO'S

SEE MAP 26 5 28

598,000

CM JCV
4/25/12

26 5 29

4,174,000