

THIS MAP WAS PREPARED FOR ASSESSMENT PURPOSE ONLY.

NW1/4 SW1/4 SEC.27 T.26S. R.6W. W.M.
DOUGLAS COUNTY

1" = 100'

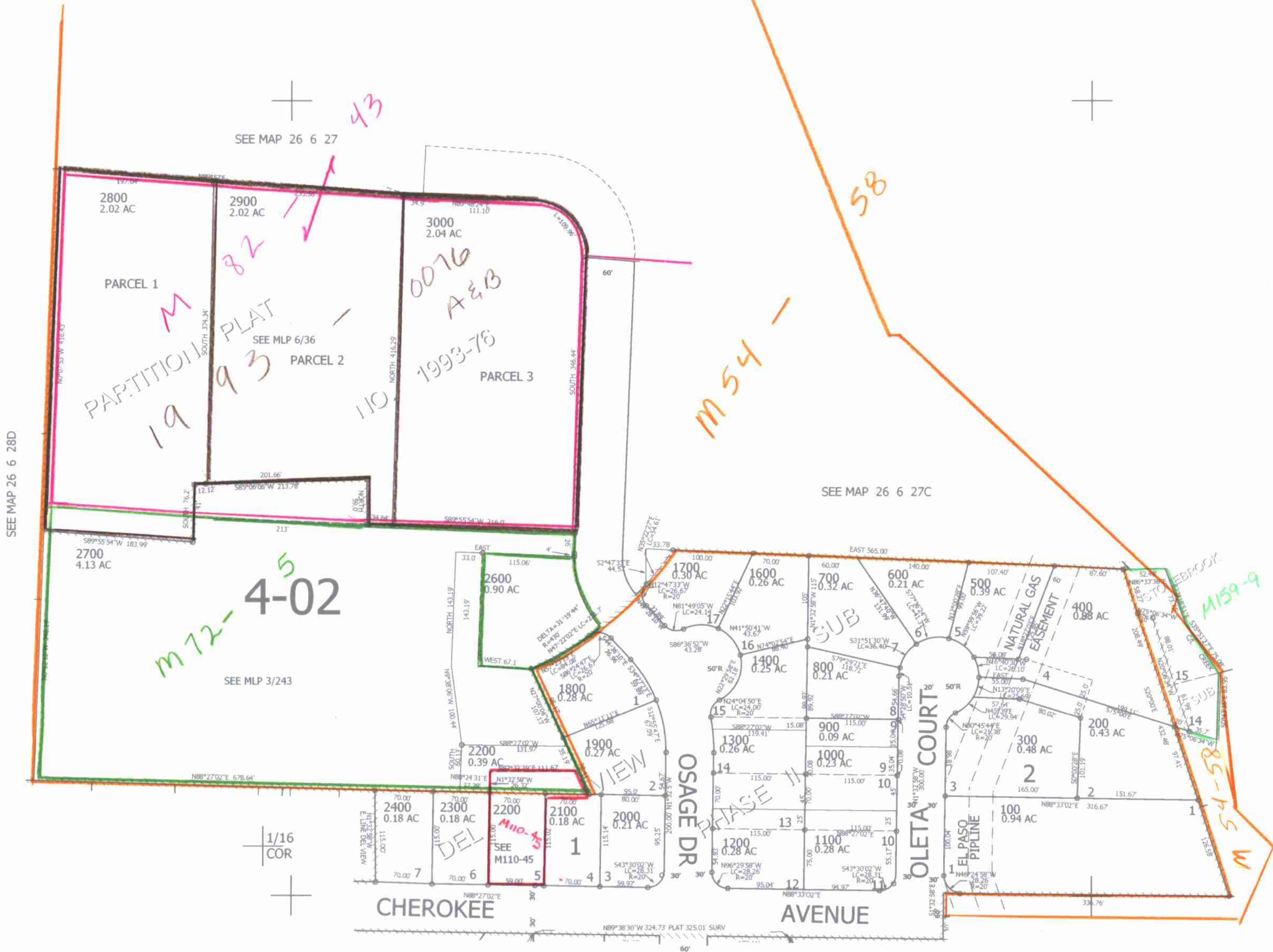
REVISED ON
3-30-09

26 6 27CB

1/4
COR

1/16
COR

CANCELLED NO'S
901 1500 2500



SEE MAP 26 6 28D

SEE MAP 26 6 27C

SEE MAP 26 6 27C

1/16
COR

1/16
COR

600,000

SEE MAP 26 6 27CC

4,148,500

3/23/09

26 6 27CB